

# Naphill & Walter's Ash Gazette

June/July  
2020



Annual Subscription £3



## Performance Computing

For Help & Home Visits  
Please call John:

m 07831 373 871

*Local + Friendly + Professional  
30 Years Experience!*

- **Slow Laptops & Computers fixed!!!**
- **Lost Photos & Files Recovered**
- **Ipads, Tablets & Phones Set-up**
- **Virus Removal & Security Checks**
- **All Repairs & Fault Finding**
- **Home & Business Systems**
- **Email & Contacts Set-up & Fixed**
- **Security checks, Antivirus**
- **Wireless Improvements**
- **Training for Everyone**
- **Home & Business Visits**

**Home Visits + Local Workshop  
Home Advice + Business Advice**

[www.itran.co.uk](http://www.itran.co.uk)  
for businesses: [www.pcomp.co.uk](http://www.pcomp.co.uk)

CORPORATE MERCHANDISE

CREATIVE DESIGN

DIGITAL & LITHO PRINT

DISPLAY GRAPHICS

FABRIC PRINTING

INSTALLATIONS

PACKAGING & PROTOTYPING

SIGNAGE

VEHICLE GRAPHICS

WEB2PRINT SOLUTIONS

**gpex**

MORE THAN PRINT

**PK**  
INPRINT

Pinstone Way, Tatling End, Gerrards Cross, Bucks. SL9 7BJ  
T: 01753 887450 E: [hello@gpex.co.uk](mailto:hello@gpex.co.uk) W: [www.gpex.co.uk](http://www.gpex.co.uk)



T: 07714 207 180  
E: [annablen324@gmail.com](mailto:annablen324@gmail.com)

Here for all your everyday foot  
health needs in your own home

General foot health and hygiene,  
high risk feet, diabetes, peripheral  
arterial disease, arthritis, fungal,  
ingrown, corns and calluses,  
verruca, athlete's foot, dry and  
cracked heels, massage and  
sports injuries.

Nikki Annable Dip FH MCFHP MSC



**Speen C of E School  
with  
Little Apples Pre-School**

• For children from 3-7 years old •

For enquires about this GOOD small school  
with Excellent RE

(Ofsted and SIAMS inspections 2019)

Please contact the Headteacher

Mrs Jackie Coles

**Tel: 01494 488321**

Email: [office@speen-cofe.bucks.sch.uk](mailto:office@speen-cofe.bucks.sch.uk)

[www.speen-cofe.bucks.sch.uk](http://www.speen-cofe.bucks.sch.uk)

Flowers Bottom Lane • Speen HP27 0SX



# Naphill & Walter's Ash Gazette June/July 2020



**EDITOR: Sonia Goby** - Tel: 569428 email: editor@naphillandwaltersash.org.uk

**ADVERTISING: Sonia Goby** - Tel: 569428 email: editor@naphillandwaltersash.org.uk

**TREASURER: Judy Whitehouse** email: treasurer@naphillandwaltersash.org.uk

**DISTRIBUTION COORDINATOR: Ian Hall** email: distribution@naphillandwaltersash.org.uk

**SECRETARY & PHOTOGRAPHIC COORDINATOR: Paul Goby** email: photo@naphillandwaltersash.org.uk

**WEBMASTER: Peter Davis** - email: webmaster@naphillandwaltersash.org.uk

**PRINTING: PKinprint** - 01753 887450

*Editorial Disclaimer: Although the editor has made every effort to ensure that the information in this magazine was correct at press time, the editor does not assume and hereby disclaims any liability to any party for any loss, damage, or disruption caused by errors or omissions, regardless of the cause. Articles are printed as sent and the content is therefore the responsibility of the contributor. Any opinions expressed in articles herein do not express the personal opinion of the editor. Comments or queries on individual articles will be forwarded to the author/contributor to substantiate.*

## Come and Join Us!

### *Our Local Clubs and Organisation Contacts*

Beavers	Barry Reading	01494 447121	
Brownies (Naphill)	Ruth Daly	01494 565571	ruth.daly3@btinternet.com
Bridge Club	Margaret Stagg	01494 530736	
Cubs - Hughenden Naphill	Beth Foster		handnhcubs@hotmail.com
Football Club - Junior Senior	Martin Beddows		naphillcubscouts@outlook.com
Friends of Naphill Common	Andy Sinclair		mailto:naphillfc_cwo@yahoo.com
Good Companions	Harry Salter	07403 249208	
Guides (Naphill)	Chris Miller	01494 564030	chairman@naphillcommon.org.uk
Men's Club	Pat Furness	01494 565501	
	Toni Green	01494 562089	
	Andrew Wasilewski	01494 562770	naphillmensclub@yahoo.co.uk
Residents Association	Gloria LeFlaive	01494 563634	glorialeflaive@msn.com
Naphill Evening W.I.	Sarah Bacon	01494 563479	Sarah.bacon39@googemail.com
Naphill Neighbours	Janet Judge	01494 563186	
Scouts (Naphill)	John Huddleston		naphillscouts@aol.com
Seniors Lunch Club	Jan Gaunt	01494 562282	
Tennis Club	Jenny Tench	01494 565406	jttench@gmail.com



# Hunter Homes

With over 20 years experience, Hunter Homes are a professional building company who can work with you from your initial ideas, through to completion.

We offer all building services including, total refurbs, kitchens, bathrooms, extensions and hard landscaping as well as full project management.

A local, family business who offer a professional and high quality service.

Contact details:

**Phone - 07708800237**

**email - [Hunterhomes@live.co.uk](mailto:Hunterhomes@live.co.uk)**

**Facebook - [@hunterhomesbucks](https://www.facebook.com/hunterhomesbucks)**



Before



After

*Fettling Land-Rovers since 1988*

## **LPME** Motor Engineering

[LPME.co.uk](http://LPME.co.uk)

- SERVICING & M.O.T REPAIRS
- DIAGNOSTIC TESTING
- WELDING & FABRICATION
- TYRES, EXHAUSTS & BATTERIES
- RESTORATIONS & REBUILDS
- UPGRADES & ACCESSORIES
- ENGINE & GEARBOX CONVERSIONS
- LARGE STOCK OF USED PARTS



01494 484694

[contact.us@lpme.co.uk](mailto:contact.us@lpme.co.uk)



Collection from home / work by arrangement

**DEFENDER  
RANGE  
ROVER**



**FREELANDER**  
*Discovery*

## **M B Electrical &**

Plumbing Services

National Inspection Council  
Electrical Installation Contractors



Member No:041067



**Our team of electrical, plumbing and gas engineers are qualified to carry out all type of domestic & commercial works including the following**

**For Free Estimate Please Call:  
01494 700 389 / 07811 946 611**

### **ELECTRICAL**

- Extra Socket + Lighting Points
- Full / Part Re-wiring
- Consumer Unit Upgrades
- Electrical Condition Report
- Garden / Security Lighting

### **PLUMBING**

- Hot & Cold Pipework
- Repairs & Installations
- G3 Approved Cylinder installers
- 1st and Second fix Kitchen
- Bathroom / WC installations

### **GAS**

- Landlords CP12 safety certificates
- New Boiler & Central Heating Installation
- Boiler servicing & repairs
- Power Flushing / Magnacleanse
- Cooker / Hob / Fire installation Servicing

## Naphill Village Hall



Reg Charity: 300309

**Chairman** - Clive Lawrence

Email: [chairman@naphillvillagehall.org.uk](mailto:chairman@naphillvillagehall.org.uk)

**Bookings** - Tanya Stevens

Email: [hallbookings@naphillvillagehall.org.uk](mailto:hallbookings@naphillvillagehall.org.uk)

Tel: 07851 169275

[www.naphillvillagehall.org.uk](http://www.naphillvillagehall.org.uk)

## Local Council Contact Information

Bradenham Parish Council Clerk	Deirdre Hanson	01494 562254	clerkbradenhampc@gmail.com
Bucks County Council	David Carroll	01494 716967	david_carroll@wycombe.gov.uk
Hughenden Parish Council Clerk	Shona Hadwen	01494 715296	clerk@hughendenpc.org.uk
Hughenden Parish Councillors	Chris Waterton	07968 268067	chris.waterton@hughendenpc.org.uk
Hughenden Parish Councillors			
Hughenden Parish Councillor			
Bucks Council Councillor	Steve Broadbent	07471 144181	steve_broadbent@wycombe.gov.uk
Bucks Council Councillor	David Carroll	01494 716967	david_carroll@wycombe.gov.uk
Bucks Council Councillor	Audrey Jones	01494 563435	audrey_jones@wycombe.gov.uk

## Helpful Contact Numbers

Hughenden Surgery	See website <a href="http://www.ourpractice.co.uk">www.ourpractice.co.uk</a>	01494 562189
Out of surgery hours		101
Breast Unit Wycombe Hospital	Breast lumps self refer	01494 526161
Stroke Support Service	Stroke sufferers, carers & family support	0300 3300 761
Shaw Clinic - Genitourinary Medicine	Genitourinary Medicine	01494 425430
Hearing Clinic Wycombe Hospital	Self refer	01494 526161
Specsavers Hearing (NHS hearing tests)	Self refer	01494 520304
Healthy Minds	Anxiety, depression, stress, postnatal wellbeing	01865 901 6000
Bereavement Listening & Support	Bereavement counselling	1296 332600
Wycombe Women's Aid/Also Men	Counselling re domestic violence	01494 461367
		Male 0808 8010 327
Carers Bucks	Help for carers	0300 7772 722
Alzheimer's Society	Dementia information & support	01296 331722

**For all emergencies call 999**



# EweMove

SALES AND LETTINGS



- A locally based, bespoke service tailored to your needs
- Available 7 days a week
- Expert marketing
- Engaging property descriptions
- 2D & 3D floor and site plans
- Premium Listing as standard
- Always accompanied viewings

For every market appraisal we attend, we donate £20 to The Thomas Ball Children's Cancer Fund and upon every completion we donate a further £250.

#### For Home Sellers We Offer:

- ✓ No Minimum Term Contract
- ✓ Competitive Rates and 'No Sale, No Fee'
- ✓ Dedicated Personal Agent Throughout

[www.EweMove.com/Chilterns](http://www.EweMove.com/Chilterns)

**01494 917051**



#### For Landlords We Offer:

- ✓ Full Management OR Tenant Find Only
- ✓ Competitive Rates and No Hidden Fees!
- ✓ Dedicated Personal Agent Throughout



A: 5-7 DUKE STREET, PRINCES RISBOROUGH, BUCKS HP27 0AT  
M: 07768 975 323 • T: 01844 346444 • W: PAINTED KITCHENS.ORG



## *Copy Date for August Gazette 8 July*

Welcome to our June/July Gazette! Just where to start on this edition! Many of us have been obeying the Covid 19 instructions and self-isolating and so, for the last two months, it has not been possible to distribute a printed edition of the Gazette. My thanks to Peter for putting these editions on line for us. Thankfully the restrictions have been lifted a little and so Ian has rallied our distribution team who have very kindly agreed to distribute this month's BUMPER edition! I am very grateful to them too!

So WHY a bumper edition? It was decided that I should include "the best bits" from the last two editions. The only problem here was choosing what were the best bits, some articles were just too long, others were not high enough definition for printing and honestly, even with 12 extra pages, I ran out of space, so please forgive me if your favorite picture or article has not been included. It will still be on the website, [www.naphillandwaltersash.org.uk](http://www.naphillandwaltersash.org.uk). for you to enjoy!

June and July are not usually a combined edition so why have I granted myself a month off? This is because we are all hoping that whilst NapFest has had to be cancelled for June this year that it will be rescheduled for the August bank holiday weekend. If this does go ahead we will publish the August Gazette a week earlier than usual to cover the pre NapFest announcements and pleas for books, cakes, help etc. Likewise, in these circumstances, the

September edition will also be published a week early and copy dates, will also be a week earlier than usual. I will of course do my best to keep everybody informed. However, there will be separate August and September editions of the Gazette this year.

It has not been possible to collect the Gazette subscriptions for this year. We will arrange this collection when the current situation is eased.

My personal thanks to everybody for all the kind offers of help, we are blessed to live in such an amazing, caring community, just so many acts of kindness! The local shops who have kept up their stock levels and literally gone the extra mile or three delivering goods. The Covid19 team who are never more than a call away when help is needed and of course all the NHS workers and everybody who has worked through this pandemic to support us all.

Himself was delighted when he was invited to take his camera gear along to a local VE Day social distancing street party and I am delighted to share a few of the photos with you. There were several such events in our community, an opportunity to socialise albeit at a distance but also to reflect and remember those who fought and died for our freedom. A stark reminder that once again we need to remain strong and resilient.

Stay safe everybody and I look forward to speaking to you all again soon.

*Sonia*

# The Window Doctor

CARE & REPAIR FOR ALL YOUR  
UPVC & ALUMINIUM WINDOW  
& DOOR PROBLEMS

- Replacement of broken down sealed units  
- misting up inside glass
- Adjust front & back doors that do not shut
- New handles, hinges and door locks
- Replacement of patio door wheels
- New security handles with keys
- New door panels and cat flaps
- New Georgian style or leaded style sealed units
- All insurance work • Burglary damage • Servicing



**PLUS** INSTALLATIONS OF NEW UPVC WINDOWS & DOORS



Call us for a FREE Survey and Quotation,  
**No call out charge**

Friendly Family Established Business

**Cowling & Co.**

**Tel: 01865 891776**  
**Mob: 07860 435742**

[www.windowdoctor.co.uk](http://www.windowdoctor.co.uk)

email: [cowlingandcothewindowdoctor@gmail.com](mailto:cowlingandcothewindowdoctor@gmail.com)



## Banford Flooring

*Your local domestic and  
contract floor layer*

**Kerry Banford**

**01494 562966 / 07443 451303**

email: [thebanfords@btinternet.com](mailto:thebanfords@btinternet.com)

## Clean and Tidy Decorators

All aspects of the trade internal and external  
protection, preparation, painting and paper hanging  
Locally based, professional, friendly and reliable  
With over 30 years experience



'Quality work without cutting corners'

Call Steve: **07932749510** alternatively  
email: [cleanandtidydecorators@gmail.com](mailto:cleanandtidydecorators@gmail.com)

## New fuse board including main earthing and bonding upgrade - £550

Upgrade to a new all metal fire resistant fuse board which  
complies with the latest wiring regulations published on  
January 1st 2016. Includes earthing upgrade\* and a full  
safety check of your homes electrics.

Call or text Tony now on 07944 162 958 or  
email: [tony@plugs.me.uk](mailto:tony@plugs.me.uk)

**plugs**  
electrical services

\* Price assumes that gas meter and  
water stop cock to be bonded are  
within 5 metres of the electric meter.



**RD**  
retsofdesign

- residential design
- building surveys
- planning permission
- interior design

*evening & weekend  
appointments available*

07985 478563 [www.retsofdesign.com](http://www.retsofdesign.com)



## Naphill Village Hall & Playing Fields Council - Chairman's Report

Registered Charity No: 300309

[www.naphillvillagehall.org.uk](http://www.naphillvillagehall.org.uk)



This month's report is somewhat different to the usual report as we have closed the village hall due to the ongoing coronavirus pandemic. The AGM has been postponed for now but will be held when we can meet in the hall at a later date. There has been a committee meeting held at the beginning of May via zoom and a small committee was set up to draw up a plan as to how the village hall will be reopened when the government allows. At the moment the hall is shut completely and I go in every other day to make sure that all is OK.

The Napfest committee is planning to hold this year's event on August bank holiday weekend, it is of course reliant on the lockdown restrictions allowing and we will not know what these will be until nearer the event. The fireworks committee also held a meeting in May and hopefully by the 7th. November most things will be back to normal but this will also be subject to any rules the government may put in place to deal with the coronavirus.

The playground is locked until we are allowed to reopen it, although the grass has grown around the trim trail that was installed just before Christmas, so when we do reopen the playground all features will be accessible.

The car park gates have been locked as the hall is closed and it will add to the security of the hall and make sure that no meetings of cars late at night are taking place or any unwanted visitors are using the car park for dubious activities.

I hope you are all well and keeping safe, once this pandemic is all over it will be great to see you all at the events that are organised in the village hall and on the crick.

*Clive Lawrence - Village Hall Chairman*

## Bradenham Parish Council Report

We hope you are all well, managing life in the lock down, home schooling, working from home or furloughed, social distancing and hope you are able to enjoy the beautiful area we live in.

The Corona Virus Pandemic put a halt to the expected local elections of 7th May 2020 as well as holding meetings held in person. The Government has brought in new legislation to allow for virtual meetings and to hold all meetings flexibly, including annual meetings and committee meetings giving Councils flexibility to hold meetings at a time, day and frequency to suit their own needs. This legislation is in place until 6th May 2021, when the local elections will now be held. As both the Chairman and Vice-Chairman were prepared to remain in post, all councillors decided to stay in post until the next election and as all councillors were in agreement, the parish council carried on. We held our first virtual meeting 11th May. This went well, just a few technical hiccups. We even had a member of the public attending as well as our Buckinghamshire Councillor Carl Etholen and the RAF representative.

BC Councillor Etholen told us about the set up with the new Unitary Council, which came in force on 1st April.

The RAF representative gave us an update on RAF assistance to the community during the pandemic.

We have been very fortunate with the kindness shown by local volunteers in offering help to those in need during the pandemic. Thank you all.

The VE day 75th Anniversary celebrations planned for 8th May were cancelled. We are looking at options to celebrate later.

A grant has been received from BC Councillor Etholen to revive the Bradenham fete, which is currently planned for 12th September, but the date, of course, is under continuous review.

We did manage to get our accounts internally audited and all were in good order.

Our next meeting will be Monday 6th July @ 7pm, most likely again a virtual meeting. We hold our meetings on Zoom

Deirdre Hansen, clerk to the Council  
[clerkbradenhampc@gmail.com](mailto:clerkbradenhampc@gmail.com)

[www.e-voice.org.uk/bradenham-parish-council](http://www.e-voice.org.uk/bradenham-parish-council)

# Sunbodies Tanning, Hair & Beauty



## Beauty Treatments include:

- Sunbeds,
- Nails - cnd shellac, sns & polish
- Waxing, threading tinting
- Eyelash extension
- Facials 3D-LIPO body contouring
- Fat freezing, hifu facelift,
- RF body/face skin tightening,
- Cavitation
- Derma Fillers (lips, chin, cheek, jaw, nose)
- Wrinkle smoothing
- Vitamin C / b12 injections
- Fat dissolving injections
- Derma planning

**Hairdressing:** for cut & blow dry, highlights, balayage & ombre tints, bridal hair and hair up Call: Lauren 07769992040 & Nicola 07554424617



Call Lisa or Georgia - 01494 565619  
81 Main Road, Naphill



## Templewood

HYPNOTHERAPY · EFT · DISCOVERY

*De-clutter your mind.*

*Be free from what holds you back.*

“*I feel so relieved to be rid of my fear! I find myself checking in to see if I still feel scared, and then realise it's completely gone. I don't know how it works, I just know that it does.*”

Charity Worker,  
free of a lifetime fear – two sessions

Hypnotherapy is a highly effective discreet and confidential complementary therapy to alleviate many fears, negative issues and habits that can weigh us down.

*As a Clinical Hypnotherapist and member of the Association for Professional Hypnosis and Psychotherapy, I can help you find relief and release from:*

<i>Anger</i>	<i>Negative thought patterns</i>
<i>Anxiety &amp; panic attacks</i>	<i>Pain</i>
<i>Negative habits and behaviours</i>	<i>Post-treatment or surgery 'cleanse &amp; reset'</i>
<i>Fear &amp; phobias</i>	<i>Recovery from trauma</i>
<i>Grief</i>	<i>smoking</i>
<i>Insomnia</i>	<i>(becoming a natural non-smoker)</i>
<i>Low mood</i>	<i>Stress reduction and management</i>

*To take a positive step forward to a brighter, lighter, happier tomorrow, please call or email to make an appointment.*

☎ 07502 602 496

✉ [am@templewood.life](mailto:am@templewood.life)

🌐 [templewood.life](http://templewood.life)

## Hughenden Parish Council

Dear Residents,

I am writing this article for the Naphill Gazette in what are truly unprecedented times as we are living with our lives governed by the lock down regulations coupled with a high level of uncertainty as to what will be happening in the future.

Firstly, our thoughts and sympathy must go out to those residents who have lost friends and relatives to the COVID 19 virus.

I would like to express the thanks of Hughenden Parish Council to all residents who are essential workers, be they in hospitals, carers looking after residents in nursing homes or in the community, and of course all those who continue to keep those services going that we especially rely on.

It is heartwarming to see that, despite this truly unfortunate situation, it has brought out the most positive side of so many people. I am amazed and overwhelmingly pleased to see how many in our community have volunteered to help as part of the NAWA COVID 19 Support Group and other organised groups, as well as those individuals who are giving their time so freely.

There is also a big thank you to everyone who is not part of a volunteer group but are simply helping out neighbours and their loved ones. The way that shops have been able to quickly adapt to help residents is most gratifying.

As a Parish Council we are looking to keep it as near as possible to business as usual while still obeying social distancing etc. Full Council meetings are being conducted remotely, the first of these remote meeting took place at the end of April.

The Council is supporting the various new and existing local voluntary organisations together in a virtual forum where concerns and best practices can be shared.

It is impressive to note that within the first few weeks of the lockdown, almost every household in the parish received at least one note through the letterbox informing them of what local support resources are available and highlighting the available

social platforms that have come into their own, like WhatsApp and Facebook groups.

On behalf of Hughenden Parish Council I would personally like to thank everyone in Naphill & Walters Ash for staying at home, following the social distancing

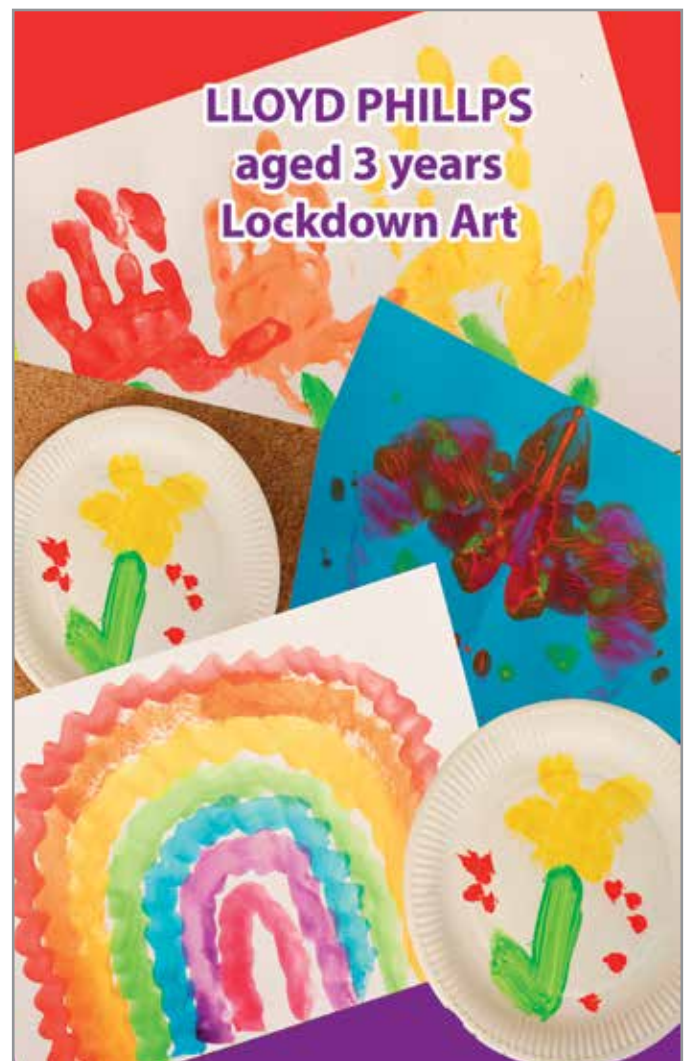
rules and hope that we can all keep safe and return as soon as possible to enjoying the lovely Parish that we all live in.

Stay safe.

*Paul*

Councillor Paul Nicholls  
Chairman

Hughenden Parish Council





## ROBERT LACEY

Ceramic Wall and Floor Tiler



22 Vincents Way



Naphill



High Wycombe,



HP14 4RA



Telephone: 01494 565262

## PRIVATE TUITION

NEED A LITTLE

### MATHS HELP!?!

I teach

MATHS up to GCSE level

ALL AGES AND STAGES,

Confidence building for adults and children  
fully qualified and CRB checked

contact Irene on 01494 562963  
irenecrechley@hotmail.com



# Active Pest Control

❄️ All Pests and Wasps  
Nests Treated

❄️ Servie Contract

❄️ One-Off Treatments

❄️ Wildlife Management

For all your pest control requirements  
contact:

01494 562325 or 07966 154655

info@active-pest-control.co.uk

9 Christopher Close,  
Naphill HP14 4SF

## The Timber Group

Beaumont | Brewer | L&G

### Your LOCAL Timber Merchant



- Timber & Sheet Materials
- Decking & Landscaping
- Fencing & Cladding
- Gates
- Internal Doors

- Flooring Showroom
- Fixings & Ironmongery
- Sheet Cutting Facilities
- Retail & Trade Welcome
- Collection or Delivery

### SPECIAL OFFER

5% off your first order upon  
presentation of the voucher  
in store only\*

\*Not Open to Trade Customers

Everything you need for your next building or landscaping project!

01494 521421 | 27 Victoria Street, HP11 2LT

Open Monday to Friday 06.30 - 17.00 and Saturday 08.00 - Noon

[www.thetimbergroup.co.uk](http://www.thetimbergroup.co.uk)

## Naphill & Walter's Ash Residents Association

### Planning

*The following are local planning applications received by Buckinghamshire Council between 13 April 2020 and 11 May 2020 for Naphill & Walter's Ash. Any responses by NAWARA appear in full on the Buckinghamshire Council website.*

**20/05779/VCDN. Beverley House, Downley Road, Naphill. HP14 4P.** Variation of condition 2 (materials) attached to PP 19/06242/FUL (Householder application for construction of two storey side/rear and single storey rear extension, construction of detached rear garage with associated driveway and dropped kerb) to allow for change of roof tiles. Received 17 Mar. Validated 22 April 2020.

**20/06018/FUL Melvern, Stocking Lane, Naphill. HP14 4NE.** Demolition of existing dwelling and construction of 1 x residential dwelling. Received 22 April. Validated 27 April 2020.

**20/05856/FUL 5 Louches Lane, Naphill. HP14 4QH.** Householder application for construction of single storey front extension following removal of existing front porch and new pitched roof to garage. Received 29 Mar. Validated. 27 April 2020.

### Permitted

**0/05385/FUL Saxon House 213 Main Road, Naphill. HP14 4SE.** HA Construction of single storey rear extension and side porch.

**20/05272//VCDN. Uplands Conference House and Training Centre, Four Ashes Road, Cryers Hill. HP15 6LB.** Variation of condition 2 (plans) and 5 (master-plan and planting strategy) attached to PP 19/05741/VCDN (Variation of condition 2 (plan numbers) attached to PP 16/05053/FUL – (Demolition of former coach house block and erection of new two storey building providing 1 x 1-bed, 10 x 2-bed & 2 x 3-bed self-contained flats. Conversion of former Conference Centre building including extensions and alterations to provide 54 x 1,2 & 3-bed flats with reception area/offices/storage to ground & first floor of Central Block (67 dwellings in total). Permitted 11 May 2020.

### Refused

**20/05582/FUL Vivaldi, Stocking Lane, Naphill. HP14 4NE.** HA for demolition of existing conservatory and construction of part two storey, part single storey rear extension.

*Gloria Leflaive 563634*



## BUILDING PLANS & PERMISSIONS



ZACHARY DESIGN

07711043244 • [zacharydesign@btconnect.com](mailto:zacharydesign@btconnect.com)  
 CHARTERED DESIGNERS • LITTLE MOSELEY HOUSE • NAPHILL • HP14 4RE

## NICK GAMMAGE BOOKS

30 years' experience, offering a local service,  
 buying and selling interesting things on paper:  
*Stamps, Postcards, Newspapers/Magazines  
 Cigarette Cards and prints, also old Vinyl Records and CD's*



Thinking of selling your old books and postcards?

Premium prices paid for good local material

Please call: 01494 432810/07956 165 569  
 email: [nickgammage@aol.com](mailto:nickgammage@aol.com)



## MD CARS Private Car Hire

First class executive service for all your travel  
 needs. Weddings, airports, theatre, London,  
 business trips.

Fully licensed and insured.

Please contact Ray on:

Mobile: 07946 433403 or Home: 01494 269251  
 email: [ray.mdcars@hotmail.com](mailto:ray.mdcars@hotmail.com)  
[www.mdchauffeurs.co.uk](http://www.mdchauffeurs.co.uk)

## M A HUNT painting & decorating



01494 564998  
 07775 626752  
[hunt.m6@sky.com](mailto:hunt.m6@sky.com)

27 Saunderton Vale, High Wycombe, Bucks HP14 4LJ

## Mobile Foot Health Practitioner

for all your Chiropody requirements

**Fiona Gibbard**

M.C.F.H.P. M.A.F.H.P.



"Bringing footcare to your door"

Prompt and courteous attention assured

Tel: 01494 482444  
 Mob: 07946 821451

## Paul Webb

[www.paulwebb.co.uk](http://www.paulwebb.co.uk)

email: [paulwebb378@gmail.com](mailto:paulwebb378@gmail.com)

- Driveways
- Patios
- Brickwork
- Gates
- Turfing
- Fencing

For your free estimate call Paul:

**07748 537404**

**01628 851095**



## Friends of Naphill Naphill Common

There is no detailed history of our Common. The best we have are several mentions in Rex Leaver's fine book *Naphill and Walters Ash* (1999) and a brief section in S. F. Piercy's *The Village Hall Naphill* (1943). Similarly, there has been no systematic survey of the archaeological remains: the banked enclosure, boundary banks and ditches, ponds and other pits are all unexplored. Old maps show that it was once called Mosely Common and it seems there was a hamlet of Mosely between Stocking Lane and Clappins Lane. ('Moseley' comes from the Anglo-Saxon for a mossy clearing in woodland.) Naphill was a separate hamlet at the Combe Hill/ Hunts Hill end. (Naphill is probably derived from 'Knapp' - a rounded hilltop). Otherwise, all we have to go by are the memories of the more ancient amongst us and the evidence from the Common itself.

At the time of the enclosures (1853-63) the Common extended over the present Main Road, to Great and Little Mosely farms. It was largely grazing land, dotted with beech and oak trees and numerous ponds for drinking water (both animals and humans. Wells are rare in Naphill). The trees were regularly pollarded for timber and firewood. (Perhaps one was coppiced – see if you can spot it.) Looking at what remains of these ancient trees it is obvious that they once had huge crowns and were growing in the open. Pollarding left them with massive trunks and a cluster of branches at a little over head height. They have since been surrounded by young trees. When the large ancient beech at Dew Pond collapsed a year or two back and the large limbs were cut off, counting the growth rings suggested that it was last pollarded in the late 18th Century. Pollarding probably stopped all together after enclosure when the villagers lost their right to get firewood.

The Lord of the Manor permitted grazing to continue and Ken Bristow recalled that grazing eventually ended in 1928. By this time much of the common was woodland, but with a wide fringe of juniper and gorse bushes (locally known as furze) plus the inevitable bracken. Both bracken and yew are poisonous to cattle. There are a few very old yews along

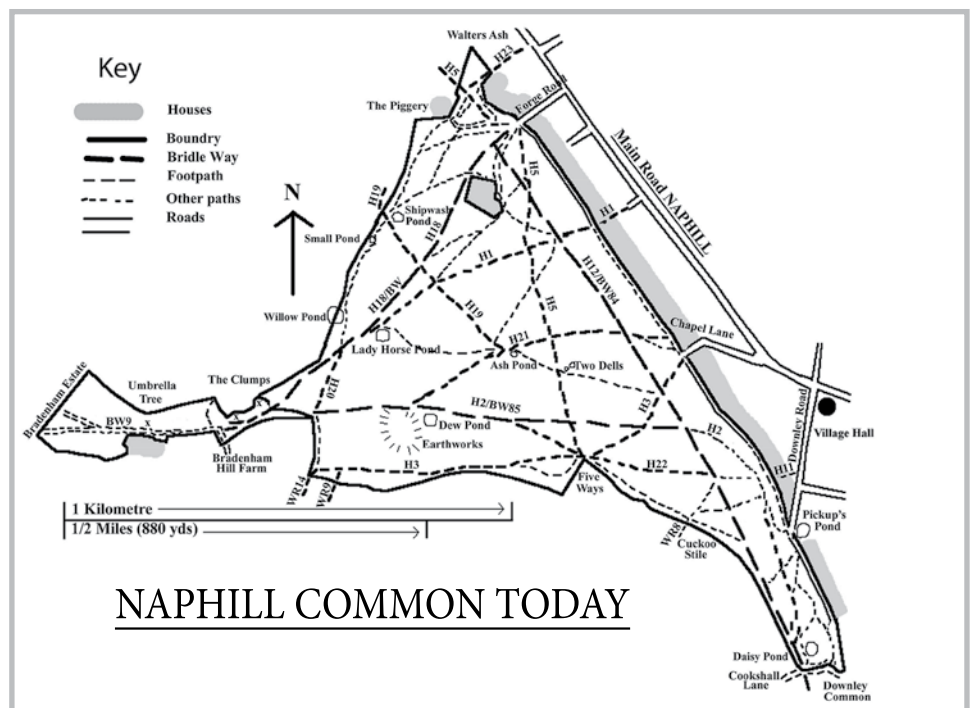
the edge of the Common, but they must have been trimmed so that browsing animals could not reach any foliage. Five old junipers have survived and The Friends of Naphill Common have planted several more.

The Common is not rich in tree species although the oak and beech have been supplemented by yews, cherries, holly and a few other species. Fortunately, there is very little ash, so when they are lost to the awful die-back disease, it will not change the Common very much. The richness of the Common is not in the diversity of tree species but in the remarkable number of ancient specimens.

Unfortunately, in the present circumstances, Chris Miller and Ron Collins will not be leading any walks this month, but it is good to see that many people are walking and cycling there, attracted by the beauty, freedom and peace of the place. Following the felling, that let in so much more light, they will soon be able to enjoy unprecedented displays of foxgloves. Maps and descriptive guides for our short walks can be found on our website at <http://naphillcommon.org.uk/walks.html> (click on the various 'Short Walk' links for a PDF file).

For the same reasons, no working parties will be taking place until the current restrictions are significantly relaxed. Apart from the risk of breaking 'social distancing' regulations, we have been informed by our insurers that undertaking activities contrary to government guidelines may mean our public liability cover will not apply

*Chris Miller* Chairman.





## **SURE-BUILD**

Quality Without Compromise

Based in Naphill, with over 30 years of experience, we are a construction specialist with experience in everything including extensions, renovations and general building.

We have the knowledge and creativity to not only help design but also the expertise to deliver superlative-quality, no matter how big or small the job. From start to finish, Sure-Build are professional, reliable and friendly.

### **Sure-Build Built on Quality**

**Mobile : 07929 207550 Tel : 01494 266332**

**Email : [pervez@sure-build.co.uk](mailto:pervez@sure-build.co.uk)**

**Website : [www.sure-build.co.uk](http://www.sure-build.co.uk)**

## **Spicer Plastering Services**

since 1986

### **Your Naphill Resident Plasterer**

All types of internal and external plastering undertaken including:

- Artex ceilings re-plastered to a smooth finish
- Damp problems rectified
- Rooms re-skimmed

**Over 30 years experience**

**Fully insured**

For a **free** quotation or advice contact

**Ian Spicer 01494 562958**  
 or **07973 553960**  
 e-mail [i.spicer288@btinternet.com](mailto:i.spicer288@btinternet.com)



## **BUCKS AERIALS**

**TV & FM SATELLITE SYSTEMS  
 DOMESTIC & COMMERCIAL**

- TV & FM AERIALS & SATELLITES INSTALLED
- EXTRA TV POINTS
- VIDEO & SATELLITE LINK-UPS
- ALL AERIALS ELECTRONICALLY ALIGNED
- SERVICE AND MAINTENANCE FULLY INSURED
- FREE SURVEY & QUOTATION
- ALL WORK GUARANTEED
- UNRIVALLED AFTER-SALES SERVICE

*Special Rates for OAP*

**Telephone 01494 441319**

*Bucks Aerials is a full member of the CAI (Confederation of Aerial Installer) A registered digital installer*





Since its creation, Hughenden Street Association has sought to work with the many community groups within the parish. Steady progress was being made and the stand at last year's Napfest certainly had plenty of visitors which was very encouraging! Fast forward to earlier this year and the Association's members have again been part of the 'community of volunteers' seeking to support residents shielding or self-isolating.

Originally established to reduce isolation and raise awareness of doorstep, telephone and online scams, particularly among elderly residents, Hughenden Street Association sought to encourage 'active neighbourliness' at a time when everyone is so busy with their own lives. The reality for many older residents (25% of Hughenden residents are aged 65+) varies: some live alone with strong local family links and or good neighbours who look out for them; others sadly do not. Feeling alone also applies to younger residents and it is important we do not lose sight of this. The Covid19 pandemic has shone a real spotlight on the health of our communities and the results are little short of stunning! In Naphill & Walter's Ash a co-ordinated response ensured that anyone shielding or

self-isolating had support to keep them safe be that a regular phone call or offer to get some shopping. It also extended further when the Association highlighted the dire situation for many people reliant on food parcels from the One Can Trust, a High Wycombe-based charity. Collection points were quickly set up across the parish. An amazing response!

#### **What lies ahead for Hughenden Street Association?**

Helping to maintain and enhance the strong network of community support going forward is a priority. In its weekly Guidance Note the Association covered a range of topics including mental health across all age groups. Whatever the new 'normal' will look like it is certain that some residents, having self-isolated for so long, will struggle to return to shopping and social-interaction. Others may find the sense of purpose created by their volunteering comes to an end as demand ceases. The Association is keen to explore with other community groups how we can support and encourage people to find their new normal. At the same time we are keen to encourage continuing volunteering, perhaps in other ways.

If you or your organisation would like to continue this conversation, do get in touch.

*Hilda Stearn*

On behalf of Hughenden Street Association  
Follow us on Twitter: @HughendenStreet  
E: hildas@btinternet.com  
M: 07808 229476



Photograph courtesy Paul Goby

# Widmer Feeds

—country store—

**We are still open for you and your pets during these unusual times.**

There are extra measures in-store to ensure everyone is safe while shopping.

**You can shop with us:**

- ◆ Online or by telephone for contactless click & collect
- ◆ Online or by telephone for free delivery over £30
- ◆ In-store is still open for browsing & shopping



**New Opening Hours: Monday—Friday 10am—4pm  
Saturday 9am—5pm Sunday CLOSED**

**Widmer Feeds Country Store, Pink Road, Lacey Green, Bucks, HP27 0PG**

**Tel: 01844 344765 [www.widmer.co.uk](http://www.widmer.co.uk)**

## Mick Smith Carpets

Quality Floor Coverings

Carpet ◆ Vinyl ◆ Laminate ◆ Luxury Vinyl Tile

Quality brand name products from trusted names, supplied and expertly fitted, from your local carpet and flooring specialist.

Free estimates advice and home sample service.  
All with great customer service.  
To suit all requirements, taste and budgets.

For more info and references visit

**[micksmithcarpets.com](http://micksmithcarpets.com)**

**01494 528847**



Fitting only service also available

*Serving homes in the area for 30 years*

## Home Pet Care

Horses, dogs, cats, rabbits, guinea pigs

*Need someone to look after your pet while on holiday or at work?*

**Please call Helen  
on  
07747 773829**




## FRASER-MORGAN SCHOOL OF DANCING

\*\*\*\*\* Naphill Village Hall \*\*\*\*\*

### RAD BALLET for ages 3+



**DANCE**  
REGISTERED TEACHER

For more information please contact:  
**01494 816539**  
**07974 121081**

# High Wycombe



## RAF High Wycombe Supports NHS in Covid-19 Front Line Operations



TWELVE personnel from RAF High Wycombe's Military Co-Responder scheme have been activated to support South Central Ambulance Service under Op RESCRIPT. These personnel would normally volunteer one of their evenings a week to man the Rapid Response Vehicles in support of the Service, now they will be working full time alongside Paramedics, Patient Transport Service (PTS) and manning the Emergency Operations Centre (EOC).

All personnel from RAF High Wycombe have received an accelerated training package. For some this was a three-day response driving course in the Ambulances, some have started the 4-week C1 Ambulance driving course, 1-day PTS patient handling course or a 1-day training package for the EOC.

Duties will vary for all personnel depending on qualifications and experience: dual crewing the frontline ambulances, driving and supporting critical life-saving treatment, supporting the PTS by manning their transport vehicles supplying medical care to those to and from hospital, and manning the EOC dispatching ambulances to those who need them.

The team have taken all the duties in their stride and as we see the COVID-19 situation develop they will be on the "front line" alongside their colleagues from the NHS.



*Cpl Leanne Wheeler*

SHQ, RAF High Wycombe  
Naphill  
Wycombe  
HP14 4UE

Email: [HighWyc@outlook.com](mailto:HighWyc@outlook.com)





# BARNES GARDEN OUTBUILDINGS

Garden buildings designed to meet your needs

Barnes Garden Outbuildings are a family run business designing and building bespoke outbuildings for residential gardens.

- Sheds
- Summerhouses
- Home Offices
- Garages
- Kennels
- Gazebos
- Fencing
- Decking

In fact any form of timber framed, timber clad garden building can be designed and built to suit your needs. Big or small, basic or fully kitted out.



07761 681340

01494 563162

[www.garden-outbuildings.co.uk](http://www.garden-outbuildings.co.uk)

email: [barnes@garden-outbuildings.co.uk](mailto:barnes@garden-outbuildings.co.uk)

## KAREN ELLIOTT

Naphill based Freelance Florist

*Specialising in making your day beautiful*

*I am a professional florist with over 30 years of experience. I specialise in event floristry and floral workshops in South Bucks and beyond. Whether it be for a wedding, a funeral, a party, a corporate event or because you want a special bunch of flowers as a gift, I guarantee to make your day that bit more special by providing perfect flowers always sourced, arranged and delivered with love, care and attention to detail.*

Karen

07790 329018

[karenelliottflorist@gmail.com](mailto:karenelliottflorist@gmail.com)

/KarenElliottFlorist

@karenelliottflorist



PRECISION

▪ ALLOY WHEEL REFURBISHMENT ▪

▪ DIAMOND CUTTING ▪

▪ POWDER COATING ▪

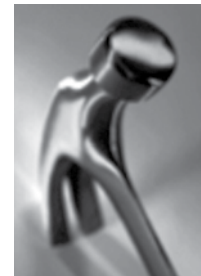
▪ SPRAY BAKE ▪

01494 564444

[www.planet-wheels.com](http://www.planet-wheels.com)

Unit 1,  
Old Brick Works,  
Main Rd.,  
Walter's Ash, HP14 4UY

## DAVID HUSSEY



### BUILDER

OVER 30 YEARS EXPERIENCE LOCALLY  
EXTENSIONS, LOFT CONVERSIONS,  
CARPENTRY RENOVATIONS,  
ALTERATIONS & REPAIRS,  
REDECORATION

01844 344379 07738157146



I am delighted to be writing my first article for the Naphill and Walter's Ash Gazette and look forward to regularly sharing updates about my work in Westminster and my constituency.

I had barely been in parliament for three months when the Prime Minister announced the lockdown restrictions because of coronavirus.

Like so many of you, this meant I had to adapt to a new way of working. The parliamentary authorities worked very quickly to enable a "hybrid" parliament, where a small number of MPs – usually just ministers and opposition spokespeople – are physically in the chamber, and backbenchers like me contribute via video link. Asking the Prime Minister a question through a laptop perched on a pile of books is certainly a strange feeling, but it is important that I can continue to fulfil my promise to make your voices heard in Parliament, even in these challenging times. I have also asked ministers questions about help for small businesses, which play such a vital role in our local economy.

Prior to the lockdown, I have spoken in the House of Commons chamber about town centre regeneration, policing, prisons, the new Environment Bill and even school uniforms, and had meetings with ministers on issues raised by constituents.

In my first few months as your MP, much has happened on the national scene. We passed the legislation to get Brexit done, saw the disappointing decision by the government to approve Phase 1 of HS2 and now

face the most serious public health crisis in a century. I know that the coronavirus emergency has made the past few months extremely difficult for many local people. I would like to thank all Naphill and Walter's Ash residents for everything you have done to help the most vulnerable in the community. Whether it has been grocery shopping, collecting a prescription or just picking up the phone to call someone who is isolated, these kind actions have undoubtedly made a huge difference to local people's lives. As we move forward into the next phase of the crisis, I have complete faith that this community spirit will endure.

Looking ahead to happier times, I very much look forward to future visits to Naphill and Walter's Ash. I have heard great things about Napfest and, if it is safe to go ahead, I hope to join in the very well-deserved celebrations with your brilliant community.

If you have an issue that you feel I may be able to help you with, please email me at [rob.butler.mp@parliament.uk](mailto:rob.butler.mp@parliament.uk)

*Rob Butler MP*

---

## David Carroll Your Councillor

---

Dear Residents

Over many years I've talked about the tremendous Community spirit we have within our area.

With this awful virus the same Community beacon is shining through.

The many acts of human kindness and support individually and collectively for our residents is truly remarkable.

Can I please thank every one who phones me and I in turn ring back the next week, people really appreciate having the contact.

So can I thank everyone involved in helping through these challenging times .

Take care and keep safe.

*Regards David.*



## BIRDS BATHROOMS

*"PROFESSIONAL,  
PUNCTUAL, HONEST  
AND RELIABLE"*

07743858031

BIRDS-BATHROOMS.CO.UK

LUKE@BIRDS-BATHROOMS.CO.UK

 /BIRDSBATHROOMS  @BIRDSBATHROOMS

# David Kirtley

## Electrician, Decorating & Maintenance

*Based locally*

- Fully qualified electrician undertaking all electrical work, including extra points, full re-wire, testing and fault finding
- Specialist high quality decorator, interior and exterior
- All small maintenance jobs.

*References available  
and happy to give you a price.*

Call David

**01494 863051**

**07703 783383**

Email [dvdkrtly@hotmail.com](mailto:dvdkrtly@hotmail.com)

# MOBILE TYRE FITTING WE COME TO YOU!

- Car, Van & High Performance Tyres
- Specialist Wheel Alignment Service
- Truck & Plant Tyre Specialist
- Trade/Accounts Welcome
- Wheel Balancing
- 4 x 4 Tyres

**Stockists Of All Leading  
Makes Of Tyres**



**T** *tyreteam*  
*mobile*

AAAAAA TYRETEAM MOBILE



**T: 01494 565920**



## Napfest Fri 28th – Sat 30th August 2020

### Movie Theme

Hello all, fingers crossed that we can hold NAPFEST on August bank holiday weekend, as you can imagine, all booking have had to be rescheduled, but we are very lucky that almost all of the booking are able to support us on our new weekend. Due to what's going on, let's make this a huge weekend of celebration, get out with our friends and family. The Committee and I need your help to make this the biggest NAPFEST ever, I think we all deserve it?? We could do with some help in these areas:

- As always we are in desperate need for cakes, tombola prizes, books and Grand Draw prizes so if you can help in any way please contact Linda. (lindaclark894@hotmail.com)
- We are always looking for extra volunteers for help to set up and close down on the separate days.

Now I've stopped begging for help, this is what's to look forward to during this fun filled weekend.

#### **Music on The Crick.**

Tickets will soon be available from our website [www.napfest.co.uk](http://www.napfest.co.uk) and are the same price as last year - £25 for a family ticket of four, adults £10, Kids £5, they will also be available at The Wheel, Shear Madness and Carries for cash only. Please be aware ticket prices will increase on the night. There will be amazing music from our bands, headlining we have 'Sultans on Swings'. You will also be able to get hot food from Noodle Nation providing Street food and Noodles. Don't forget your refreshments from our famous bar and Topsy Flamingo. This year we will also have numerous inflatables, bungee trampolines, and a Fair Ground ride, these are free to ride. This is a great night but do remember to keep warm even if it is August! GET YOUR TICKETS EARLY.

#### **Fete on The Crick,**

We have got so much more for you this year, not only better inflatables than last year and a fairground ride, we also have celebrity performances including 'BUMBLE BEE', yes the real one!!!! There are even more new stalls (still not too late to book at [nwafete@hotmail.co.uk](mailto:nwafete@hotmail.co.uk)) than last year and many more events happening in the arena. Don't forget to come in fancy dress 'Movie Themed' and stall holders please dress your stall, we have more great new trophies that you can win. The procession and flag bearer will happen as last year so please all make the effort again this year. All those organisations wishing to participate in the procession please contact Linda and provide a small narrative, so that our host for the day can read it out, as you proudly parade around the arena.

Can't wait to see you all there.  
*Linda and the Napfest Committee*

## Classics on the Crick

Due to the current situation we are still tentatively hoping to go ahead with Classics on the Crick on Sunday 30th August. Please keep watching this space as things are liable to chop, change and adapt with the Government guidelines and the lockdown easing. We will keep you informed if there are precautions etc that will need to be adhered to once we get nearer to the 30th Aug.

We hope you are all safe and well and have spent all this spare time titivating or even rebuilding your beloved vehicles. We can't wait to see what everyone has been up to and catch up with you later in the year! Please keep posting your vehicle photos on our FB page.

We are still looking for some different Food stalls and also Trade stalls that may want to be considered. If this something you are interested in then please contact [traders.classicsonthecrick@gmail.com](mailto:traders.classicsonthecrick@gmail.com) If you'd like to enter your vehicles then please keep an eye on the COTC website for further details. If you'd like to be considered for judging (bikes or cars / vehicles) then please contact COTC via the website or any other of our social media platforms.

Stay safe and keep polishing those engines!

*Sam Bayley*



*Himself was invited to do some photography at a local gathering, social distancing observed! There were several BEAUTIFULLY restored vehicles! In anticipation of Classics on the Crick, a taster of what might possibly be on display!*

*Sonia*

## Naphill Evening WI

Well, here we are, still in lockdown. However, the weather has been lovely and most of us have managed to find some bedding plants for the garden – although my daughter did manage to spend twice as much as I usually do!

We have been visited regularly by a red kite who has taken a liking to the top of our recently lopped walnut tree. Unfortunately, he is extremely sensitive to the sound of a camera clicking so we have no evidence.

The lovely WI Committee have continued to regularly telephone all members and I know this has been appreciated by all of us but particularly those who live alone. Some of us have met on our walks on the Common and had a chat at the requisite distance.

I have been asked if our Sew and Chat group would make some face masks and I wonder how many WI members, or any readers of the Gazette, have a sewing machine in the back of the cupboard that hasn't been used for a while.

The pattern that I found on the web is amazingly easy and requires two pieces of cotton or polycotton fabric 9" x 7" and two pieces of thin elastic 7" long. The long sides of the fabric are sewn together on the wrong side and then

turned out. The short ends are then turned in and the ends of the elastic tucked into each corner. Three pleats along the length and then sew elastic and pleats in. Why not have a go and you can have your own personalised face mask.

Stay safe and hope to see everyone soon.

*Carol Gilliam*





## Growing Your Own

---

I thought it would be useful if I described my greenhouse, which is an aluminium one sitting on a brick wall about 15 inches high. The dimensions are 12.5 feet by 8.25 feet by about 9 feet high at the apex. It has two skylights which open automatically for ventilation, and a louvre window at ground level which I can open manually. The whole of the left hand side is a deep bed about 15 inches deep, in which 100% farmyard manure was put 30 years ago and which receives a topping up of farmyard manure every year. The right hand side is raised staging about three feet high on which I lay 60-litre bags of multipurpose compost. I open up the bags and use them as super grow-bags, enriching them with fertiliser pellets. I prefer them to ordinary grow-bags since the latter do not contain enough compost. In the bags I grow cucumbers and peppers. I made a discovery earlier this year. Wanting some radishes really early in the season I sowed the seed in the bags which were just sitting there from last year. The results were very good indeed, "French Breakfast" radishes of a good size, completely free of the small maggots one sometimes finds when radishes are grown in the open. There was just time to harvest them before the bags were replaced with new ones and seedlings of peppers and cucumbers planted out.

The main deep bed is left during the autumn, winter and early spring for cropping the abundant watercress which self-seeds there. I had a good crop this time. The watercress was removed when it went to seed in mid-April. I then planted-out eighteen "Alicante" tomato plants, which I have found to be the best all-round variety. Over the years I have experimented with many varieties, but the combination of size of fruit, taste and size of crop of "Alicante" is hard to beat. Early in the season, before the tomato plants get too big, I use the space between the plants to put out trays of seedlings of other vegetables destined for planting out on the allotment or in the garden. I have a "Heath Robinson" overhead sprinkling system to water everything in the left hand bed. It is on a timer, which is most useful and avoids forgetting to water. Each tomato plant also has its own drip feed watering outlet, as do the individual pepper and cucumber plants on the staging. All the aforementioned vegetables I start off from seeds.

To keep out aphids I grow perennial *Oxalis Triangularis* "Purple Shamrock" along the edge of the deep bed and annual marigolds here and there. There are no insects in the greenhouse as a result, which necessitates hand pollination of the peppers.

I hope the description of my greenhouse will give you some ideas!

Good gardening!

*Mike Mason*

## A Point of View

---

Writing these notes on a beautiful morning in May with a beautiful blue sky, even more appreciated now that the trees in front of my house have been considerably thinned out, allowing the sunlight to show through onto my garden again. I say again because having lived in the house for almost 60 years I have seen the beech and oak trees become very overgrown with holly and yew blocking out the light. Photographs taken of the common in 1902 show the frontage of the "Lady's Myle"\* as being open common land with few trees. My Great Aunt, Miss Edith Kennedy, could walk along Number One footpath in her Sunday best, to St Botolph's, Bradenham, for both Matins and Evensong Services. I can still remember patches of what we called Cumberland grass, a very fine dwarf fescue species of grass which was well grazed by rabbits. I always understood that the Naphill Cricket wicket was created from this turf, certainly worn patches of the wicket were replaced by this grass.

Unfortunately, the clear blue sky at 7.00 am is soon transformed into a cloudy overcast sky by the numerous flights out of Heathrow leaving behind their vapour trails which condense into cloud. This is denied by some observers but the recent period of fine weather and a lockdown on flying from London Heathrow appears to confirm my opinion. The Chiltern hills are a much-flown area as any flight map will confirm, both from Heathrow and Luton airports. Perhaps with a reduction in air travel we can enjoy clear skies for some time.

There appear to be many more walkers and families who are discovering the beauty of the woodlands of the area, particularly during this period of fine weather. This beauty has been much enhanced by an increased flowering of bluebells extended by the fine weather, next we will see the foxgloves which seem to have been spread further by the recent ground works in the woodlands.

There has been a considerable increase in cycling on Naphill Common and not just on the bridle ways but on many of the pedestrian footpaths where walkers have precedence. Many bikes do not have bells these days, I always thought these were a legal necessity but perhaps I am wrong, but some cyclists are fast and are upon walkers very quickly, hopefully when the mud reappears this situation will be rectified!

*Richard Pushman*

## Naphill Tennis Club

We are thrilled that our tennis courts are open again for play albeit with certain rules attached. Singles only to be played but doubles may be played by members of the same household. Due to the coronavirus, social distancing is essential and players are requested to bring their own marked balls and hand sanitizer.

Tennis is a great non-contact sport, perfect for fun and fitness, and one of the best sporting activities under the present situation. For this reason, and to prevent too many people visiting the courts at any one time, our Chairman, David Fletcher, has set up an online booking system. If you are not a member but would like to join the club, we are offering reduced rates of £58 adult, £108 per couple, £25 junior/student (7 years to under 25 years) and £10 for a Mini (under 7 years) to run from 1 June 2020 until 31 March 2021. There is a further 20% reduction for additional children in a family. For further information, please email our Membership Secretary, Sarah Dengel, at [sarah.dengel1@gmail.com](mailto:sarah.dengel1@gmail.com) or visit our website: [www.naphilltennisclub.org.uk](http://www.naphilltennisclub.org.uk).

Current members of the club who have not yet paid their subscriptions for 2020/21, due to the coronavirus, qualify for the reduced rate of £83 adult, £158 a couple, £40 for a junior/student and £10 for a mini + 20% reduction for a second junior as before. BACS payment preferred please. Information on the online booking system has already been sent to members.

*Jenny Tench*

## WANTED

Grounds Maintenance Odd Jobs  
Person for about 2 hours per  
week. Would suit active retired  
person. For further details please  
contact Paul Knight on 01494  
563121.

## Lacey Green Players



Hello Naphill and Walters Ash, it's been an interesting few months hasn't it? Back in early March we were almost ready to start piecing together this year's performance when the pandemic struck.

We have a director, a full production team, a play ready to go and we were about to start auditioning when Covid19 struck. However, the committee will ensure, despite this interruption, that the show will go on!

The Lacey Green Players are pleased to announce that this year's performance will be the thrilling "The Ghost Train" by Arnold Ridley, who played Godfrey in Dad's Army. This play was written in and is set in the 1920's. It has been made into film several times over the last century and was one of Ridley's most successful scripts. This play will be technically interesting, and anyone who may be keen to join the sound and lighting specialists for a great opportunity to learn new skills should contact us on the details provided with this article!

LGP are keeping everything crossed in the hopes of still performing at our regular slot at the end of November, however, this is subject to change. We will keep you all up to date via Facebook/website and publications. Please be aware that this year will be a performance only!

Once everything has calmed down and we are allowed to meet again to rehearse we shall hold formal auditions. However, anybody who is interested in getting involved, please make yourselves known to us now! Email us at [info@laceygreenplayers.co.uk](mailto:info@laceygreenplayers.co.uk), be it performing, stage handling, props, lighting, tech side, please get in touch!

We can't wait to get this production rolling! But, until then, our best wishes to you and stay safe!

*Chloe Page* - LGP

[info@laceygreenplayers.co.uk](mailto:info@laceygreenplayers.co.uk)  
[www.facebook.com/laceygreeplayers](http://www.facebook.com/laceygreeplayers)

## Naphill & Walter's Ash COVID Support Team



**ARE YOU ISOLATED AT HOME?  
DO YOU NEED SOME HELP?**



Grocery shopping, prescription collection, dog walking or need help whilst isolated NAWA Covid 19 Support Team are your local neighbourhood group who are nearby and will try to help you

Please call us on **07857 932915**

Find us on Facebook @ NAWA Covid 19 Support Page

"These strange times are challenging for everyone but they are also bringing people together. The Naphill & Walters Ash Covid 19 Support Team was set up by a rapidly growing team of volunteers to help those in our villages who are isolated or may need help.

Our aim is to provide help and support, working alongside existing village neighbourhood groups and our neighbourly residents.

Following a leaflet drop to every house, we can offer services including grocery shopping, prescription collection and dog walking. So if you need anything and don't know who to ask, please contact the team on 07857 932915 or via Facebook @ NAWA Covid 19 Support Page and we will do our best to help you."

*Tim Waterhouse*



## Charlotte and Ava's Charity Bookstall - Raising Money for the NHS

Charlotte and Ava decided that they would like to raise money for the NHS in recognition of the hard work of all their staff in taking care of people in hospital because of the virus. They made a book sale with puzzles. They had lots of books that were not being used as they had already read them. They started by putting the book sale outside Charlottes front garden and now they are putting the book sale in the very front of Ava's garden.

They were very happy to be raising money for a good cause. Some people even donated books for them to sell. The girls used their pocket money to buy some of these books, thus adding to the total raised for charity.



So far, the girls have raised over £230 and are still selling books. Ava would like to raise £800 and Charlotte would like to get to £15,000! The girls plan to donate the money to a local hospital. Ava and Charlotte thank everybody who came to their book sale.

Charlotte (Age 8) and Ava (Age 7)

## March Maintenance

Professional & Friendly Gardening Services



MARCH MAINTENANCE



### OUR SERVICES

Lawn mowing  
Bush & hedge trimming  
Weed control  
Pruning  
Planting  
Clean-ups and more

Andrew March  
07391723512

march.maintenance@outlook.com



**DRAINS & DOWNPIPES**

ALL ASPECTS OF DRAINAGE & GUTTERING COVERED

UNBLOCK – INSTALL – MAINTAIN

- Blocked drains, toilets and sinks cleared with fixed prices
  - High pressure jetting
  - CCTV drain surveys
- All drain & gutter repairs & maintenance covered
  - Residential & Commercial
  - Fully Insured
- Free quotes, no call out fees
  - Friendly, local & reliable



Contact Glenn on:

Tel: 01494 482465

Mob: 07535 644363 / 07950 403094

Email: [info@drainsanddownpipes.co.uk](mailto:info@drainsanddownpipes.co.uk)

Web: [www.drainsanddownpipes.co.uk](http://www.drainsanddownpipes.co.uk)

## Time Capsule Poem

*(Lockdown 2020)*

We laugh and we play and smile all day  
so you don't know the worry and fear I hide away.

We paint and stick and do messy play  
with hope you don't see the sadness that has come to stay.

We dress up, lunge and jump with Joe Wicks  
Because it takes our minds of all those things I can't fix.  
We have our own makeshift school but Mr Ellis, Mrs Carter and Mrs Hall  
you say are the only that can make your brains full.

We call our dearest on WhatsApp and Zoom  
cause not seeing them at all is a terrible doom.

We strengthen the bond of brother and sister  
to cherish it now and when you are much bigger.

We walk in the woods when it all gets too much  
somehow is all better when with nature we are in touch.

We practise to be thankful for all the things small  
for life is to be appreciated when darkness befalls.

Even the planet knows we are trying so hard  
giving us sunshine to warm up our heart.

When all this is over so glad we will be  
that apart but together we beat thee!

*Gordana Tanceva-Cobley*



# Lockdown Bears



We were delighted when Mummy gave us the task of coming up with a theme for Lockdown Bears. We thought really hard about what props we could use and something we could all do together.

Mummy suggested thinking about what we missed and what we thought other children in the village may be missing throughout this horrible time. It wasn't long before agreed...story times with our teachers and class friends!

So we brainstormed about things that reminded us of story time at school and came up with the following. Our friendly teachers, a fun story, comfy cushions, stacks of books and us all sitting and listening carefully to our teachers. Our mum thought it would be a nice idea to put together a class register and give our teacher a nice cup of tea. So we gathered up everything and had lots of fun putting it together. We also love the fact that loads of you stopped by to come say hello to our bears. It would be really cool if others wanted to have a go at it. It was lots of fun.

We really miss story time at school and we are looking forward to seeing our teachers and friends again.

Stay safe everyone.

Love

*Jessica, Harriet & Emily Watson*



## Rainbows of hope

It is an incredibly different time for all of us at the moment. Our children are all being incredibly brave, and it is wonderful to see so many photographs of the fun they are having safely at home. We have seen so many beautiful rainbows around the village which bring us lots of cheer and smiles. For those of you unable to leave home to see the children's artwork here are a few of our families and their beautiful rainbows.

From all of us here at Toddle In Group, we wish you all the very best of health. We look forward to the days where we can all be together again, and enjoy the company of friends and family. Whilst times are challenging now, we know it won't be forever. We send our love and support to a wonderful community

***Kim Cahalan Crompton.***



## Peggy Ewart Remembers VE Day Street Party in 1945



6th June 1945 - Victory in Europe street party, Briar Crescent, Northolt, Middlesex

My cousin and I experienced social distancing at our street party on Victory in Europe Day June 6th 1945. I was approaching 7 years old. We both had mumps but no-one wanted us to miss the party so our heavy dining room table was placed at the end of the long row in our crescent in Northolt so we were not too close to the other children. I am saddened that, in 2020, my cousin is shielding at her bungalow in Surrey and I cannot visit her.

The only men present were those who could not serve for health reasons. Everyone helped to prepare by making bunting and flags, and a life sized guy in the form of Adolph Hitler. He was burned on a bonfire by

the concrete air raid shelter we had in the street. My mother and I had slept in it occasionally when the raids were at their height. Our home was a few miles from an aerodrome; we had problems with incendiary bombs rather than large ones. The dining room in our small terraced house was taken up with a Morrison shelter under which my mother and I shared a bed. We dug for victory in our little garden, digging up the lawn to do so.

We joined thousands of people in London to celebrate victory. I was rather scared of the crowds but everyone was happy and enjoying the floodlit fountains in the parks. We had all lived in darkness for far too long.

*Peggy Ewart*

## John Veysey shared his VE Day 1945 Memories with his Daughter



75 years ago, 8 May, my Dad, who was 15, was at the VE Day parade in London. He was chosen to represent the Scouts. They caught a really early train as they had to be in their places round the Victoria statue outside Buckingham Palace by 7.00am, where they had a front row seat! He remembers seeing troops from all around the world, famous Generals, music, bands etc. The place was heavily decorated and there were millions of people. They stayed all day! Went home exhausted but happy!

*Elaine Veysey*



## VE day 8th May 1945 – to VE day 75 years on

As a child of five and a half, I was fully aware of a change in the emotionally charged atmosphere in the first few days in May 1945.

I understood war as I lived not far from London. The aeroplanes going over nightly meant most nights we slept in the Morrison shelter- all five of my family – I could identify the engine of a spitfire as opposed to an enemy plane, taught me by my brother 13 years older.

The planes had stopped coming, and I was put to bed in my bedroom each night.

The announcement was made - Mr Churchill's voice I knew well - his tone very different from previous broadcasts. We were to have a special day to celebrate.

I remember my Mum taking me on the train to Dads office (he was too old to be in the army) which overlooked Trafalgar Square. I remember being stood on a chair in the widow, and being given torn paper by Dads secretary, to throw out of the window. Memory is an odd thing, my Dads secretary was called Miss Hooper! How come I remember that? When I can't remember the reason I have come into a room!

That afternoon I remember kicking through the shredded paper that littered the streets and the steps of the station as we made our way home.

Later that night we walked to a piece of waste ground where a huge bonfire had been built. Typical of an older brother, he told me they were going to burn Hitler on top. I was terrified, Hitler to me at 5 was the ultimate bogey man, I thought they had the real man and I did not want to see him!

VE day 75 years on will be just as memorable; as the whole world is fighting another war, with an enemy

just as unkind, but more silent than the aeroplanes roaring overhead and dropping bombs. Street parties, like the ones in 1945 were impossible as social distancing was the rule of the day!

Living in a cul-de-sac with a friendly bunch, we had a day of the best of fun! We started our day on our doorsteps in respectful silence for the men and woman who delivered our freedom - - - - then houses were decorated with flags, and anything red white and blue we could get hold of. Tables were set out in our individual drives, some of these decorated with white cloths and red, white and blue flowers. A large portable radio was supplied by a neighbour and tuned into a special radio station for the day - playing 1940's music and folks telling their memories. We ate our separate picnics at 4pm, whilst enjoying a glass or two and singing along to the radio (this reflected my age as I could remember most of the words!!)

The 'party planners' had scheduled in at 9pm a rousing chorus, joining with Vera Lyn singing 'We'll Meet Again! Don't worry Vera, as only a few of us oldies knew it, the result was not memorable and we won't be giving up our 'day jobs'

After this we retired back in and left the dedicated party people enjoying themselves. That night I remember lying in bed listening to the happy sounds outside and dropping off to a rousing chorus of '10 Green Bottles'.

That day brought together all generations from our road – 80 plus down to 5 years old - a joyful day for all to remember.

*The Shy Contributor*



## Food Bank Collections in Naphill/Walter's Ash

The One Can Trust which serves High Wycombe and the surrounding area has seen demand for its help more than double recently.

With regular collection points in supermarkets, schools and churches less active, 90% of donations come via what the One Can Trust call Street Heroes - neighbourhoods and communities coming together to drop off tinned food, which are then taken to the food bank.

Tinned meats, pies, veg and pasta are in particular demand.

If you would like to donate, there are local collection points at:

- Louches Lane (opposite Hychenden Close)
- Battingswood Gardens (just off Clappins Lane)
- Moseley Road

If there are more, please let us know and we can share!

Messages from our Street Heroes:

Eadie (12, Louches Lane): We started doing this because my grandad had been volunteering at the One Can Trust for 3 years,. Unfortunately due to his age and current restrictions he had to give up volunteering. I think it is so important to support people who need our help, and it makes me feel so sad that there are people that need this support so, with my Mum's help we signed up our family to do this! It is a great way to give a little if you can, it means so much to so many.

Lily (6) and Rhys (3) Battingswood Gardens: Thank you for helping us to help other people, we are really grateful for your help, no one should have to be hungry.

Please visit the One Can Trust website to find out more information about ways to help!<https://onecantrust.org.uk/>



Charlotte Tindale & Emma Griffiths



Oliver Catchpole's  
Rainbow

## We are Missing Naphill & Walter's Ash School!



This photo is three siblings who are desperately missing Naphill & Walters Ash village - they all love going to school there but we live a good 12 minute drive away so during lockdown they've been missing all the other little things about the village too... like Samantha in Year 6 walking with friends to the Crick after school or Anna in Year 4 enjoying a squash and crisps at The Wheel with our friends after gymnastics on Thursdays and Ozzy in Year R out exploring the top of the Bradenham woods with his classmates at Forest School.

Last month we walked from Downley through the woodland pathways into the village for a quick march-through and the happiness on their faces to just be back in a familiar place that they love so much was worth the exhaustion (we had chosen the hottest day of the lockdown to do this!).

They miss their friends, miss going for after school ice creams at the co-op on sunny days, they miss their wonderful teachers and the fun they have at the school.

We're doing our best at home, as all parents are but it's never going to replace the special place that Naphill & Walters Ash School has in their minds. This 'permanent vacation' is wearing very thin and Zoom chats just don't quite scratch that itch!

*Sinead & James Sillars*

## From our Wye Correspondent

Firstly, I hope my first article in a while finds my fellow residents safe and well, whilst hopefully coping with the lockdown restrictions. It was very reassuring to note, from the official figures published in the Bucks Free Press at least, that we have not suffered any Covid related fatalities in our immediate area and long may this continue. It has been pleasing to hear the support for the NHS on Thursdays and we enjoyed a small but distance-governed gathering on VE Day in our street to remember and celebrate the end of another challenging time from our great history.

As many of you will be aware the Government has opened the door for Estate Agents to start business again, albeit under some fairly stringent guidelines. I cannot help but think the decision is driven by the collecting of millions of pounds in Stamp Duty held up in the pipeline by the Covid lockdown.

We at Wye will have started trading again by the time you read this. The office in Naphill will be open between 10am- 2pm for callers initially; however we are operating normal office hours for a telephone response. We have already seen a rise in the number of enquiries and many of you are monitoring the situation before perhaps deciding to come to the market.

My personal opinion is that after a short continued lull, whilst our methodology for starting to trade again becomes established, the housing market will become very buoyant. I do not see prices moving up or down drastically but much higher volumes of people wanting to move. I have spoken to a lot of people over the last 6 weeks and whilst many will be forced to sell due to a downturn in their financial position, many are reviewing lifestyle choices and have decided to "get on with life" and make that move they have been considering for a while. I also envisage people wanting to move to areas like ours from bigger urban conurbations where perhaps Covid had a bigger impact. Many of you have spent the enforced lockdown carrying out home improvements and clearing out garages. This has not been made easy when hiring a skip or buying paint has been so difficult!

Daisy's Diner will be open again for refreshments and I look forward to seeing some of my regular customers, and their owners of course! I hope that you are all able to enjoy the warmer weather and enjoy the summer months as best that the guidelines allow.

*Alan Draper*

# The Wheel

## 19th June 2006 – Present Day

---

Mark and I have now been at The Wheel for 14 years this month, and during our closure we have had time to look back over the many happy years here. On June the 19th 2006 we took over a rather run down, sad little pub that we saw so much potential in. It was rather under loved with a Mediterranean décor, a huge TV coming out of the ceiling, and uncared for gardens. It was said at that time the pub would never sell good ale (how wrong they were)!

August 2006, we had our opening party with live music and a BBQ. The garden was full, and our neighbours had to bring their own bench! Looking back that was the start, Mark and I were here and not going anywhere, it was full steam ahead.

June 2007 was the Smoking Ban and we were told by customers the pub would never survive! So, The Spare Wheel was born, we built the most amazing smoking area which transformed the previously unused back garden. It has since been updated in 2017 into a fabulous courtyard and great sun trap during the day.

Amazingly our Beer Festivals started in Oct 2006 till Sept 2015, we always did one in April and then a joint one in Sept/Oct with The Whip Inn. These events secured us our place in the CAMRA (campaign for real ale) Good Beer Guide from 2008 and then winning the CAMRA best pub in 2011 and 2016. In July 2007 we held a Cider Festival (Napple Cider Fest) it was a one and only event as we soon learnt that people can't handle their cider. The chaos and entertainment of these events were amazing as we often sold out by the Saturday afternoon and the Hog Roasts were to die for. Some of you will remember them but there are a lot of you who won't! I personally will never live down the April 2010 one as I never made it home from a holiday because of the Volcano eruption that stopped flights, I am still constantly reminded of it. Sadly we were planning a smaller pop-up style beer festival for VE Day this year, but we all know the reason why that didn't happen.

We extended the pub with a new dining area out the back which opened July 2011, the construction was a sight to see with massive machinery going over the top of the building, with this came employment of Chef and then many themed food nights. In November 2018 we refurbished the toilets and confused you all by swapping them round, with it came the wrong toilet fine box and a great deal of laughter as many just couldn't get the right one!

Animals – well there have been many types over the years and started with Amber then Daisy, they made us well known for being a dog friendly pub and of course we now have Maxii and Molly. We held our first Dog photography day in 2009 and have continued since. Over the years we have become known as the local dog rescue as I know so many in the area and we now have the help of a pet scanner. In 2019 we came runners up for the Dog Friendly Pub Awards. But we did not stop at dogs. We owned four chickens that were escape artists and were caught frequently at the bus stop heading for Wycombe. Other visitors have ranged from rabbits, horses, parrots and The Bird of Prey Days.

As you will all know Mark and I do not follow the traditional TV pub sports! So, the two main ones here have always been Motorbikes and Rugby. So, who remembers the Scooter Rally in 2011, we had over 250 scooters visit, they parked everywhere and the noise and smell of two stroke was incredible. The array of scooters was fantastic and the whole day was incredible. We have now been through four Rugby World Cups at some god-awful times in the morning (breakfast was served) and the yearly fixtures of the Six Nations. Due to our passion we sponsor both Risborough and Wycombe rugby clubs which has definitely brought its own entertainment over the years with some amazing get togethers. Table jousting was a favourite, tree climbing, broken fences, along with a lot of nakedness!

Our amazing village holds the best fireworks nights which have been rather busy over the years with queues going out the doors as we have a great view from our garden and carpark (although you still have to pay a donation to watch it from the pub)! Then there is Fete Day which is now Napfest. It is scary to think that I took over the Fete back in 2010 which the committee then developed into Napfest in 2013. The effort put into these events by everyone proves how great this village is, our staff have always gone all out with their costumes and floats. It all started with The Musketeers and then so many more; Pirates of the Caribbean with Mark as Captain Jack Sparrow, a very soggy Magic Round About, Wild West with myself as the sheriff, Circus featuring Dog Lions and the Human Cannon Ball (yep Mark again), no matter how or what The Wheel always had the beer on tap to hand out to all those thirsty Dads and Mums! So many great memories. Who remembers the Tent the being set on fire in 2009?

Mark's pub signs over the years have not only made you laugh but also got noticed by the press on a couple of occasions. In 2008 the 'Alister Darling you're Barred' got me interviewed on BBC Radio and in the papers. On the 29th March 2010 we went viral in a big way with the A-Board sign 'Beer Shortages Soon, Please Panic Buy' we had 3.8 million hits on social media, and it was in the national papers too! (yes, that started here at The Wheel no matter what others claim) I feel I should also mention Drunk Santa who joins us every year, he is famous in his own right. Many, many photos have been taken and he has even fooled the police and passers by more than once.

Snow days in the village are always fun, some of you have used skis and snowboards to get to us, as no-one can get on or off the hill, people have had to stay with us due to the chaos but it has always been fun. If we had the chance it was metal tray sledging at Hunts Hill fields, which is rather fast as poor Daisy found out once.

Any excuse for a party! We have both celebrated big birthdays here, and helped celebrate many of yours over the years, some have been sensible while others a bit more raucous. Then, there have been all the staff parties, Christmas and New Year Parties. So many have involved fancy dress and we have lots of great photos including Jan in his penguin costume that stopped the guards at the base as he cycled past in full costume. To

list but a few more; Beach Party, St. Trinians, Superheroes, Sitcoms, Flower Power, Spice Girls and many more. Over the 14 years we have also sadly seen the loss of family, friends and regulars but we have always carried on and raised a glass or two for them.

There's so much more to say but here's a little list of a few favourites - Motorbikes / Mountain bikes riding through the pub, Beast of Naphill at the war memorial, Mountain Bikers sleeping in the wrong house, Christmas in August and March, Reggae in Dec, Charity events, Brilliant DJs, Having to wheelbarrow someone home, Movember (you all looked awful), Lots of dancing, Fences flattened, Tents and breakfasts, Closing tunes, Very loud sing a longs and so much more.

Finally, to all our fantastic staff over the years, there are so many it is frightening. When they join us they join The Wheel Family, our staff have always been the key to our pub and the personalities we have had have been amazing, many now are friends for life. We have watched so many grow into fabulous adults with some brilliant jobs and are very proud of them all. The team now are awesome, and we cannot wait to be open, serving and raising a glass with you all again soon.

We hope this brings back some great memories and hope you are ready to make many more.

*Claire, Mark and The Team (past and present) Cheers!*

# The Wheel

Naphill

Main Road, Naphill, HP14 4QA

Tel: 01494 562210



Family Friendly • Dog Friendly • Good Beer Guide since 2008 • Real Fires • Excellent smoking area & gardens

“Great locals and great staff for a great atmosphere!”

## Award Winning Traditional British Pub

“Choose real life or Wheel Life!”

A quirky pub - it's bigger than it looks!  
With 2 bars and a function/dining area.

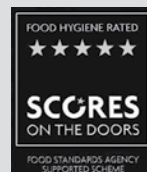
Excellent homemade food - allergies catered for.



[www.thewheelnaphill.com](http://www.thewheelnaphill.com) [info@thewheelnaphill.com](mailto:info@thewheelnaphill.com)



Bronze Award  
in Buckinghamshire



## A Moment of Deliverance

So, whilst there have been no physical Gazette deliveries to make, I have missed my monthly workouts - letter box wrestling & barrier strengthening exercises - and observational skill tests.

*Please can I ask everyone to do the following whilst the weather is good?*

1. Go outside - beyond your own boundary, with this issue of the Gazette is your hand... Yes, I know it's scary after all these weeks but you can do it! Then follow the instructions:
2. Open your gate if you have one. Is it easy, stiff, and warped or a smooth travel?
3. Head for a door where you can see a letter box. Is the path navigable?
4. At the door, is the box at a sensible height or do you have to bend down (from the knees of course, watch your back)?
5. Push the Gazette through the letter box opening. Are there scratchy brushes around the inside providing too much resistance; is there a dog panting/barking the other side making you nervous of a friendly lick (or worse); does the lip of the box snap back on your hand; are the hinges so stiff it takes two hands to prise it open. Phew... Is the Gazette in or did you have to post into a wall box which is too small for A4 magazines or full up?
6. Retrace your steps and go back to the boundary. If you have a gate check if the latch is easy to operate; did you have to lift the gate to close it? Did it try and "bite" your fingers?
7. Now, it's nearly time to go back inside so head back to your front door. Imagine you are going to be asking for Gazette subs. Where is the doorbell/knocker? Is it easy to use? Can you hear that it worked?
8. Enter - have a cuppa/beer/wine (it is wine o'clock somewhere in the world), and write down all that needs adjustment and implement the changes asap.

The postal workers, Gazette volunteers and everyone who delivers to your premises will thank you....

*A member of the Gazette delivery Team*



## Wycombe Photographic Society

I thought that for this month's article I would look back at previous years and see what we had been up to and compare it to this year to put in reality the changes in twelve months.

Our Annual Exhibition, held in the Eden Centre, is normally over for another year with Cups and Trophies won by members for the many different classes.

This year there was no Annual Exhibition, however, we will use Zoom Conferencing later in the year for our projected images. Zoom Conference calls - something very few had ever heard of but is now a common word and used by many. The cup and trophy winning images will be on our web site so you will be able to see them.

Normally we are entering our "quiet season" with the finals for the best prints of the year as well as the best digital projected images all happening before the end of June.

This year the finals of our projected images will be judged using Zoom, again, but our print finals will have to wait until... whenever.

One plus of technology is that we are holding regular General Discussion Groups and Guest Speakers with Zoom Conferencing during this usual "quiet season"

In the past July and August are busy times for our members out taking those great photos ready for the start of our new year at the beginning of September.

This year I suspect we will have many macro images having been taken indoors with the occasional outdoor image.

June is the month when all the gardens of Naphill and Walters Ash are in full bloom so out with your cameras and take that photo of the colours of Naphill and Walters Ash... then send it to Sonia for inclusion in a future edition of The Gazette.

This can still be done whilst you are taking your exercise walk.

Usually it is preparation for the Napfest Weekend with all those opportunities to get your camera out and take fabulous photos for The Gazette.

This year it is planned for Fri-Sun 28-30th August.

This month you will see another prize winning image from our members included in the Gazette. (*see below*)

Please check our web site to see what is going on at Wycombe Photographic Society  
[www.wycombephotographicsociety.org.uk](http://www.wycombephotographicsociety.org.uk)

David Greenwood  
Membership Secretary  
Wycombe Photographic Society



*About to Strike by Paul Day*



Chiltern Hills  
Arboriculture

**All Aspects of Tree Surgery / Hedge Cutting**

**Commercial Sites / Domestic Gardens**

**Estate Maintenance / Tree Surveys**

**Full Public Liability Insurance**

07961 825814 / [mike@chilternarmor.co.uk](mailto:mike@chilternarmor.co.uk)  
07555 831391 / [danny@chilternarmor.co.uk](mailto:danny@chilternarmor.co.uk)  
[www.chilternarmor.co.uk](http://www.chilternarmor.co.uk)



**Coles &  
Blackwell**

**Car Service & Repairs**

Book online at:  
[www.colesandblackwell.co.uk](http://www.colesandblackwell.co.uk)

**Quality car servicing and repairs  
much closer than you think!**

Where are we? You will find us 300 metres down the small lane opposite the top of Bradenham Wood Lane in Walters Ash, High Wycombe HP14 4UX

*Established in 1959*



**Servicing**

Did you know you can get your car serviced by us without invalidating your manufacturers warranty? Legislation passed a few years ago means that you can now choose any garage of your choice to service your vehicle.

**Courtesy cars**

We have a fleet of new loan cars at your disposal whilst we service your own car or repair bodywork damage. Best of all - they are **FREE OF CHARGE!** All part of the service you come to expect from Coles & Blackwell

air conditioning \_\_\_\_\_

mot testing \_\_\_\_\_

vehicle servicing and repairs \_\_\_\_\_

crash repairs \_\_\_\_\_

tyres, clutches & brakes \_\_\_\_\_

computerised diagnostics \_\_\_\_\_

batteries & exhausts \_\_\_\_\_

Open Monday to Friday 9:00am to 5:30pm  
Saturday 8:30 am - 12:30pm

**01494 563102**



## Chiltern Hills Arboriculture

As I write, we are now elevated to the status of “partial lock-down”. The relaxation of the government guidance has been good news for the green fingered tribe. We now have unfettered access to garden centres. We can start to plant out those beds, fill hanging baskets, and get seedlings propagating in the greenhouse.

The period of full lock-down has resulted in an increase in enquiries to CHA. Many people are spending way more time in their gardens, either on furlough or working from home, and naturally their thoughts and observations have turned to unkempt hedges and overgrown trees in need of some TLC. CHA are completely capable of quoting for work safely and operating at an appropriate distance for anyone who needs a tree pruned or a hedge trimmed.

These strange times have presented unusual problems. Following the strong winds during mid May we received a few enquiries regarding emergency works. One in particular was out towards Wendover, from the people I bought our house in the village from.

Their Chestnut tree had split right down the main bough. It was a substantial tree, and had the main electricity feed to their house running through its upper branches. After a chat on Sunday, I visited the site on Monday, and we carried out a full dismantle on Tuesday. (I know... it sounds like a Craig David song). The electricity company were in attendance to shroud the adjacent cables, remove the wires passing through the tree, and ultimately disconnect the generator and re-connect the mains. Team work.

Danny’s charity tree climb at The Wheel this summer is obviously on hold, until we all know what is actually going on.

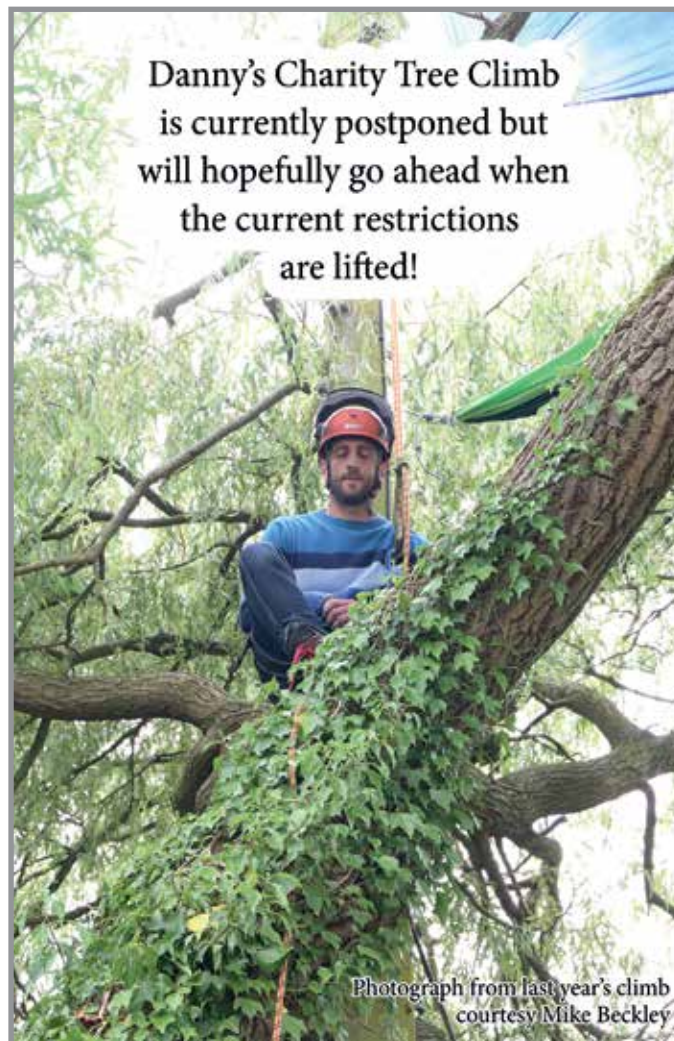
I believe that Janet Keen has rescheduled her parachute jump. Please still keep giving, see the following link:

<https://tinyurl.com/y85cmqj4>

Stay safe.... and stay home guys, for the time being

*Mike Beckley*

Chiltern Hills Arboriculture



Photograph from last year's climb  
courtesy Mike Beckley



Courtesy Mike Beckley



Brand new  
nursery  
at  
Naphill & Walters  
Ash School  
**NOW OPEN!**



For more information  
01494 957196  
enquiries@toddleingroup.co.uk  
www.toddleingroup.co.uk

# Shear Madness Barbers



**Mandy Dearden**  
Tel: 07843 100 574  
Email: s.madness@yahoo.co.uk

Open:  
Mon-Fri 9.30am-5pm  
Saturday 8.30am-1pm  
**CLOSED Thursday**  
245 Main Road, Walter's Ash, HP14 4TH

## NAPHILL LOCAL MINI MARKET Post Office

- Newspapers & Magazines (home delivery available)
- Lottery
- Fresh fruit & vegetables
- Freshly baked bread, rolls, sweet pastries & hot savouries available daily
- Frozen food & ice creams
- Organic & Gluten free products

- Refillable Bio D washing up & fabric conditioner
- Stationery & mailing products
- Greeting cards
- Beers, ales, spirits & wines
- Wide range of everyday grocery essentials
- Postal services, free cash withdrawals & cash deposits

19 Main Road, Naphill, High Wycombe HP14 4QD  
Tel: Post Office: 01494 562173 Shop: 01494 563125  
Email: Naphilllocal@outlook.com



## Community Notes of Thanks

---

During these recent difficult times it becomes easy to see things that are of value to the community, things that are often overlooked and taken for granted. For the last 45 years our family have used Batchelors, now the Post Office, and we just wanted to write in to say a big thank you to the new owners, who have worked tirelessly to keep it very well stocked, safe and open 7 days a week, all while looking after a young family. They have worked incredibly hard and always have a smile on their faces. The store has been a vital resource for many and we just thought they should be recognised for the important service they provide for the Naphill & Walters Ash community.

*The Lomas Family*

---

It is amazing how adversity brings out the very best in people. The Corona virus has certainly done that. In just our own village community there are numerous examples from the NAWA Covid Support Team of volunteers whose services we have made use of to the Co-op, the post office store and Hughenden shop, our Wren Davis milkman and post lady - the latter cheers us up with her amusing form of fancy dress! Add to this our wonderful friends and neighbours and you can appreciate how very lucky we are to live in such a close knit community.

A very sincere thank you to you all for your support. We are most grateful.

*Ann Gower and Ron Collins*

---

## Naphill Local & Post Office

---

If you are self isolating or you do not wish to venture out, there's no need to panic, our shop is open 7 days a week 7am till 9pm. We are at present are receiving deliveries daily and our shelves are well stocked. If you require a home delivery please call the shop on 01494 563125. We will do our best to support all our customers and local residents. Stay safe everyone!

We are well stocked  
If you need your shopping  
delivered please call us!  
01494 563125

*Nadeem*

## Shear Madness

---



So I'm sat here at home, on the day after Boris' confusing statement, and from what I can gather we won't be going back to work until July. I have got all my PPE ready to go and measures have been put in place.

Appointments only: **NO WALK IN'S!**

For me you need to ring 07843100574

For Dawn's ladies ring 01494 536006

On a lighter note, I have rediscovered some old skills! As you all know I don't cook meals from scratch nor do I bake! Well I made my son's birthday cake! I've not baked him a cake for 23 years and it was edible! I even made smoked mackerel pate! I knew you would be impressed.

My friends are helping to keep me sane! We chat over the internet using an app called Houseparty which means that we can all see each other and chat which is fun. Every Friday we have a dress up and sing a song crazy time together which I record and post on the shop's Facebook page. I don't think Simon Cowell will be calling us anytime soon, we are truly awful, but we certainly enjoy our remote time together!

Sending love to you all

**Stay safe! Stay well! Stay home!**

If it is July 4th I will be talking appointments from the 1st July, office hours only!

*Mandy x*

Make your conservatory an ALL year round room  
and a fully functional part of your house

Replace your glass roof with a fully insulated Guardian Roof


## FREE QUOTATIONS





## Payne's of Glass

Conservatories, Garden Rooms  
Orangeries, Windows, Doors &  
Home Extensions  
Aluminium, Hardwood, PVCu

 01494 565526

 07793 639 130

 ray@paynesofglass.co.uk

 www.paynesofglass.co.uk



## N.K. WEST CARPENTRY and JOINERY

- Fine quality A rated, ovolo profile UPVC windows with high security locking
- Composite doors in any colour or design -NEW keyless remote locking
- Bespoke timber windows and doors in pine, hardwood or oak
- Double glazed units
- Design and build staircases
- Garage conversions
- Velux roof lights
- Built-in wardrobes and cupboards
- Flooring
- Partitions, walls
- Radiator cabinets made-to-measure

Phone: **01296 330206 or 07774 190027**



email: [nkw@nkwest.co.uk](mailto:nkw@nkwest.co.uk)

[www.nkwestcarpentry.co.uk](http://www.nkwestcarpentry.co.uk)



## HORIZON

Neurological Physiotherapy

### Do you have a Neurological Condition?

- Stroke
- Brain Injury
- Multiple Sclerosis
- Spinal Cord Injury
- Parkinsons Disease
- Guillain Barre Syndrome

We can help...

Call for a FREE telephone consultation

**01280 825711**

or visit our website for more information:

[www.horizonphysiotherapy.co.uk](http://www.horizonphysiotherapy.co.uk)

Based in Speen, our team of specialist physiotherapists can visit you at home or see you at one of our clinic locations



Firstly, from all of us at Hearing Dogs, we sincerely hope you, and those close to you, are all safe and well.

Many people are feeling isolated at the moment. We understand this very well. Many of the deaf people we help have spent years feeling this way because of their deafness. Not being able to leave their homes, feeling cut off from loved ones, facing communication barriers every day, or simply having no face-to-face interaction at all, can make even the most resilient people feel isolated and lonely.

This is a daily reality for many deaf people, even before the Coronavirus outbreak, so it makes us even more committed to helping them. However, doing so is more difficult now.

We've had a halt much of our fundraising activity across the UK and cancel face-to-face puppy training classes. We've closed our restaurant and gift shop in Saunderton, cancelled the weekly tours of our dog training centre, and reduced activity in lots of other areas. This is all affecting how we keep going, but we are resilient and optimistic about the future.

Helping deaf people and caring for our amazing pups is our utmost priority, and our Hearing Dogs family has really come together to navigate this unique period. We have calmly adapted, and we are confident we will overcome this turbulence with resilience and kindness.

All of our hearing dogs-in-training are now being trained in the homes (and gardens!) of their amazing volunteer puppy trainers. They are continuing with various elements of their training with remote support from our trainers, and as always, the pups are playing

lots of games and being kept mentally and physically stimulated.

We are continuing to support our existing hearing dog partnerships, albeit remotely, and the adaptability shown by everyone who has a hearing dog has been remarkable. For each of them, their hearing dogs are an incredibly valuable source of companionship and comfort during these worrying times of increased isolation.

Our dogs are expertly trained to deliver a wide range of bespoke sound alerts to their deaf partner in the home. So, they are carrying on their amazing duties, alerting their deaf partners to important and life-saving sounds, which adds extra reassurance during these longer periods alone in one's home.

The Coronavirus crisis may have slowed us down, but with our innovative staff, our adaptable and generous volunteers, and our wonderful dogs, it won't stop us helping as many deaf people as we can.

We care a great deal about our wonderful supporters in the local area and we hope that sharing how Hearing Dogs is coping during this time of crisis, and telling you a bit about what our puppies have been up to, has brought a smile to your face.

If you want to find out more about what we've been up to during the Coronavirus crisis, visit [www.hearingdogs.org.uk](http://www.hearingdogs.org.uk).

*From all the team at Hearing Dogs for Deaf People*

*Stay safe and well.*

# Mark Franklin

Your Local Gardener

Here to keep your garden BEAUTIFUL!

## For all general gardening:

*mowing, weeding, planting,  
hedging cutting etc, no job too big  
or too small, I'm here to help!*

For a free quote  
Call MARK

 01494 815998

 0744 6353179



## ALL GENERAL MAINTENANCE WORKS CARRIED OUT

**PATIO SPECIALIST  
WALL & FLOOR TILING  
PAINTING & DECORATING  
PLUMBING  
FENCING  
BLOCK PAVING  
GUTTERS CLEARED**

Call Trevor for a Free Estimate  
No Obligation - No Call Out Fee  
E-Mail: [suttonsproperty@aol.com](mailto:suttonsproperty@aol.com)  
Tel: 01494 638953  
Mobile: 07754 948743

# Z.B. HEJSAK



**THE BEST IN  
DOUBLE GLAZING  
ESTABLISHED 30 YEARS**

**WINDOWS DOORS &  
CONSERVATORIES  
UPVC OR ALUMINIUM  
SUPPLY & FIT OR D.I.Y**

**FOR A FREE QUOTE OR ADVICE  
(WITH OR WITHOUT SIZES)**

**RING: BISH**

**07931 322204**

**01494 445475**

**email [zhejsak@hotmail.com](mailto:zhejsak@hotmail.com)**



**LEOCRAFT**  
Furniture Restoration and Renovation  
Groewood House · Bolter End Lane  
High Wycombe · HP14 3LU  
T: 01494 882944 [www.leocraft.co.uk](http://www.leocraft.co.uk)

## A Message from Padre Lacey - Hippo moments



I'll confess to you (I know it's traditionally the other way round) I've had a few 'hippo moments' recently. You know those times, when you just want to wallow in the stuff that seems to be swamping you. Things being out of the ordinary, worrying about COVID, not knowing how things will be and when they will be settled again...missing friends and family and juggling different roles in the home. Well, with a box set/chick flick and a packet of biscuits (OK, maybe more than one), that's when I have my hippo moments...but, just like a hippo wallowing in the mud, we can't stay there all the time. Life needs to carry on and somehow, we must pick ourselves up, shake off the lethargy, acknowledge the sorrow and carry on. However, let's not cut wallowing short, and when we are wallowing let's not feel guilty about sitting there for a bit.

So, I've hippo-ed recently. And I'm sharing this with you because I think, in sharing this wallowing, it almost gives permission for other wallowers (I know that's not a word!) to wallow. And, I wanted to share my wallowing antics with you because it's important not to wallow alone. My whole vocation is to support

people. And, to be able to support people, I need those people to come to me in their vulnerability, to share honestly in sometimes their hardest, scariest, saddest and gut wrenchingly difficult seasons. And when they share, I often become the wallowing comrade. Sitting with someone in their brokenness is a most incredible privilege and although wallowing is unlikely to shift the situation, it can shift the person within their situation.

COVID is still going to be around after your wallowing, the restrictions on who you can see will still be there, but once the grief, the sadness, the fear, the guilt or the anxiety has been dwelt in, it can either begin to be lived with or stepped out of. Wallowing is part of being human...but so also is hope and resilience. One of my favourite songs at the moment and my go to support in helping me to look beyond the wallowing is 'The Blessing'. It's come out of a group of songwriters in America and is well worth a listen. One phrase which has stuck for me is that 'in our weeping and rejoicing he is for you'. And that's my prayer for all you lovely people of Walter's Ash and Naphill, that whether you're wallowing or not, that you will be blessed and that if you are longing for a wallowing comrade, get in touch with me, or with someone. Because I believe through everything someone is for you.

Contact Padre Chrissie on: [christina.lacey102@mod.gov.uk](mailto:christina.lacey102@mod.gov.uk) or 01494 494469



Our RAF Families Celebrated VE Day

## Still Fundraising Through Recycling During Lockdown!

You may remember an article last year about setting up a recycling scheme locally to fundraise for St John's School in Lacey Green. Well, since then it has gone from strength to strength and we have raised over £1000 for the school from other people's waste!

We recycle 14 different streams of waste. These are collected from the donation points and sorted by hand into the different categories. When I have boxes weighing over 5kg these are sent to Terracycle who transform them into new items such as plant pots, garden benches, and children's play equipment. Each waste stream is sponsored by a different company, e.g Crisps by Walkers, Baby food pouches by Ella's kitchen, and they pay for the shipping from here to Terracycle and the points we are awarded for the waste is converted into £s for charity!

Prior to the Covid-19 lockdown, waste was being collected in shops and public places in High Wycombe, Naphill, Walter's Ash, Lacey Green and Princes Risborough. Currently, with shops and cafes closed there are just 2 locations still running. One is a wheelie bin that is located outside Lacey Green Village Hall (on the right, behind the hedge!) and another at an address in Walter's Ash (email for details). I would love a permanent wheelie bin in Naphill too so if you know of a location that would accept one then please let me know (unfortunately the Village Hall is not an option).

If you'd like to get recycling at home then please have a read of the list below and if you eat / use these items please consider setting up a collection point in your home and then, when you have enough just pop them in the wheelie bins! Pre-sorting of waste into categories is really really helpful if you can (bread bags are useful for this task!) and careful reading of the lists is essential (unfortunately I receive a lot of items that have to just go into my rubbish bin and it makes life very difficult).

Each number is a different waste stream – try not to mix them up too much!

- 1. Crisp Packets** – All crisp packets, including multipack outers. Please try not to scrunch or fold packets into small balls / triangles / knots – flat packets are the best and are much easier for us to pack.
- 2. Popcorn, nuts, pretzel packets** – As above, all packets are accepted including multipacks. Again, please don't fold or scrunch into balls. NO – dried fruit packets, seed packets.
- 3. Bread Bags** – Any brand of stretchy plastic loaf bags. We only accept the stretchy type bags – like a basic sliced loaf. NO – 'Crinkly' trick packaging. Wraps, crumpets, bread rolls, pitta, baguette, muffins, brioche, croissant or pasty packaging, greaseproof paper style packaging (e.g Warburtons).
- 4. Confectionery** – All brands of confectionery are accepted (sweets, chocolate). NO – foil, paper or rigid plastic packaging – please place in regular household recycling.

- 5. Pringles Tubes - YES** – Pringles Tubes. **NO** – any other tube brand.
- 6. Biscuits and snacks** – Plastic biscuit wrappers e.g digestives, go ahead bars, Jacobs cracker wrappers, cake bar wrappers, Bear Yoyo packets. NO – Plastic biscuit trays, cardboard wrappers.
- 7. Beauty Product Packaging** – Flexible plastic tubes, sachets, lids, pumps, plastic roll on deodorant bottles, face wipe packaging, plastic tops from regular deodorant, hair dye tubes. NO - Baby wipe packaging, rigid plastic or glass bottles or tubs, pumps from household cleaning bottles, medication tubes.
- 8. Oral Care** - toothbrushes, toothpaste tubes, electric toothbrush heads, toothbrush packaging. NO - Electric or battery-operated toothbrush bodies, pump toothpaste, wooden toothbrushes, mouthwash bottles, interdental brushes.
- 9. Baby Food Pouches** – Any brand of baby food pouches. NO – pouches for other products e.g capri sun (please separate from other waste as they can leak!)
- 10. Makeup Packaging** – Plastic makeup packaging, mascara wands, eyeshadow boxes, lipstick, lip balm, metallic tubes, facial wipes packaging.
- 11. Carex Packaging** – Soap bottle pumps, carex refill pouches. NO – Plastic bottles
- 12. Home Hygiene Packaging** – FLEXIBLE PLASTIC ONLY – eg Fragrance twin pack sleeves, flexible stain remover packaging, dishwasher table and salt packaging, cleaning wipe packaging. NO – Laundry detergent packaging, aerosols, cleaning bottle pumps, oven cleaner packaging.
- 13. BRANDED Printer cartridges** – Inkjet and toner cartridges – BRANDED only. NO - waste cartridges (please separate cartridges from other waste as they tend to leak!)
- 14. Writing Implements** – Biro's, highlighter pens, marker pens

Also hopefully coming soon!! – **Cheese Packaging** (please keep hold of items for now and check the Facebook page for if I get accepted on the scheme)

Please note that whilst other food packaging may be the same type of plastic as some items listed above, unless it is the right food type I cannot accept it. Here is a list of a few items I regularly receive that I can't recycle. Please put these in your regular bin – packaging from..... fruit, veg, ice lollies, rice, pasta, yogurt, coffee, tea, cereal, granola, butter, nappy, kitchen rolls, toys, baby wipes, freezer food & plastic envelopes.

Thanks for reading. Email me or message via Facebook if you have any further questions.

Jo Sharp

recycling@allaboutjo.me.uk

<https://www.facebook.com/RecyclingForStJohnsPrimary/>  
Terracycle home page - <https://www.terracycle.com/en-GB/>



## Rhubarb and the Allotments

My son and I walk around the allotments quite a lot. He enjoys learning where our food comes from in the course of our nature walks. I try to get the foods we see onto our dinner plates. Recently, as we passed, one kind allotment holder gave us some rhubarb.

My son was keen to use the rhubarb to make one savoury dish and one sweet dish. We made a cake and a chutney. Needless to say, the more popular was the cake. With all the hallmarks of a winter indulgence treat the spiciness reminded me more of zingy jamaican ginger cake. (I think you could always add a teaspoon of ginger into this recipe!) The rhubarb added the nice gooey element that kids love and for the adults, a vegetable to contribute to their five-a-day!

The chutney, like most chutneys, was fruity but tart enough to bring out the flavours of any cheese accompaniment, although my husband much liked a large dollop on a fish cake!

If anyone is interested, we would love to trade produce for products as it such fun to see what we can 'manufacture' from home.

We love the allotments so. Such a pleasure to have, one day maybe we will have our own!

### Kim's Rhubarb Cake Recipe

#### Ingredients

- 140g butter, softened, plus extra for greasing.
- 300g self-raising flour.
- 2 tsp mixed spice.
- 1 tsp ground ginger.
- 100g dark muscovado sugar.
- 250g golden syrup.
- 1 tsp bicarbonate of soda.
- 2eggs, beaten.
- 300g rhubarb cut into short lengths.
- Icing sugar, for dusting.

#### Method

- Heat oven to 180C/fan 160C/gas 4 and put the kettle on.
- Butter and line a deep 20cm square cake tin.
- Sift the flour and spices into a bowl.
- In the food processor, beat together the butter and sugar until light and fluffy, then beat in the golden syrup
- Dissolve the bicarbonate of soda in 200ml boiling water, then gradually pour through the spout of the processor.
- Pulse in the flour, then add the eggs, mixing briefly.
- Remove the bowl from the processor, then gently stir in the rhubarb.
- Pour the mixture into the tin and bake for 50-60 mins, until the cake feels firm to the touch and springs back when pressed. Cool in the tin for 5 mins, then turn out and cool on a wire rack. Dust with icing sugar.

*Kimberley Travers (mumma) and JJ (mini farmer)*



**SEE MORE.  
DO MORE.**

Eyezen #1 IN SPECTACLE LENSES WORLDWIDE\* Essilor

**BUY ONE GET ONE HALF PRICE**  
terms and conditions apply

**LEIGH LEWIS OPTOMETRIST**  
247 Main Rd, Walters Ash, High Wycombe HP14 4TH  
Telephone: 01494 564 600

## Hughenden Valley FOOT CLINIC



Foot problems, toenail reconstruction  
and routine foot care

Open weekdays and weekends  
Evening appointments available

**Clinic appointments 01494 913187**  
[www.hughendenvalleyfootclinic.com](http://www.hughendenvalleyfootclinic.com)

### Clarkes Aerials & Satellite Services

- Installation and service to TV & radio aerials.
- Free to view and European satellite
- TV. Extra points.
- Multi-point and communal systems installed.

*Free surveys and quotes.  
30 years' trade experience*

**Tel 07712 732877**  
119 Main Road, Naphill

### S.K. Rouse Brickwork

**Extensions, Flintwork, Patios, Fireplaces,  
Walls, Block Paving, All Trades Supplied.**

92 Chorley Road  
West Wycombe Village  
High Wycombe  
Bucks HP14 3AR

01494 448201  
07798 846793  
[steve@skrouse.co.uk](mailto:steve@skrouse.co.uk)

## Kim Johnson Plumbing



**Complete bathroom installations**  
Hot and cold water tanks  
Taps, ball valves and immersions.

**For a free estimate call Kim:**



**Tel: 01494 562757**  
**Mob: 07796 306087**

## Camomile PT - Exercise and community in times of uncertainty



### Camomile PT Personal Training and Nutrition



**About you**

- Are you looking to build or regain strength, fitness & wellbeing but don't know how to get going
- Have you noticed you have lost some strength & struggle to do some things you used to do easily?
- Would you like the option to train on your own or as a group (4-8 people) or a combination?



**How I can help**

- Fitness assessments, Goal setting & Progress measurement
- Creation of varied & fun programmes to enable you to achieve your goals
- Nutrition analysis & advice
- 1-2-1 or small groups
- Free initial consultation
- Locations & times to suit you
- Fully Qualified L3 Personal Trainer
- Lots of support and encouragement



**Book a free initial consultation**

Hilary Spain 07909 833566  
email: [info@camomileconsulting.com](mailto:info@camomileconsulting.com)  
Facebook: Camomile PT  
Instagram: CamomilePT



There is so much confusing information around about health & wellbeing, particularly around what we should & shouldn't eat & a multitude of exercise fads, offering a quick fix. Experts however agree, that the right type & intensity of exercise, is good for us all, physically & mentally. Being active also boosts the immune system, & reduces our risk of disease.

These benefits could not be more important at the moment. Being online in small groups, whilst not as rich as being face to face, offers the opportunity to follow a complete effective and balanced exercise package, in the comfort and safety of your home, and importantly, creates a real sense of community and team work. Classes can be added and adapted to suit the group's needs.

If you have been thinking about how to get back into exercise or building or rebuilding your strength, then why not use this time to get in touch and see how my classes can help you. Here's some of the fantastic feedback I have had from my amazing clients particularly during lockdown.

- *Hilary is a great teacher....All my shoulder aches are now at bay!! I do not like going to gyms but love this!" Penny Todd*
- *Hilary has helped me in more ways than everyone would believe! I didn't believe in myself and Hilary has taught me that I can do exercise and my*

*motivation is at an all time high! I can't recommend Camomile PT enough!" Eileen Thomas*

- *Since joining Camomile PT a few months ago I have become stronger and fitter. Hilary's classes are fun and varied and altogether a great way to get some effective exercise in a friendly, age-appropriate way." Sue Hawes*
- *The group sessions make us feel part of a group and thus inspire each other, I also have 1-1 sessions. Hilary is an inspiring PT and has helped with mind, body and spirit during these difficult times. As a tennis player with various injuries she has really helped strengthened areas in my body and made me feel stronger and more confident for when I get back on court! Hilary is such a positive energy you cannot help but be swept up with the positivity. I would whole heartedly recommend Hilary to all." Annette Harrison*

A huge thank you to all my clients for their support and for being so inspiring and motivated! You are a joy to work with.

Stay Safe & Take care everyone!

*Hilary Spain 07909 833566*

Level 3 Qualified Personal Trainer  
[info@camomileconsulting.com](mailto:info@camomileconsulting.com)  
Facebook : Camomile PT  
Instagram camomilept



# VILLAGE ENVIRONMENTAL SERVICES

## DOMESTIC DRAIN SERVICES

Proprietor: Dennis Cook  
Est. 1979

# BLOCKED DRAINS?

FAMILY RUN BUSINESS SINCE 1979  
BLOCKED DRAINS CLEARED  
REASONABLE RATES  
CCTV DRAIN SURVEYS  
NO EXTRA CHARGE FOR EVENING, WEEKEND OR BANK HOLIDAY CALLOUTS  
FULL PUBLIC LIABILITY INSURANCE



## CALL US DAY OR NIGHT

**24/7  
CALLOUT  
SERVICE**

**07850 635 844** 01296 624 221 (MESSAGES)



## ROSS ELECTRICS

Stocking Lane, Naphill

Tel: 01494 565707 07831 801747



Did you notice your boiler was noisy this winter?  
Are there cold spots on your radiators?

An overhaul of your system can:

- Reduce running costs
- Prolong the life of your boiler
- Reduce your carbon footprint

All plumbing and heating installations and servicing

Bathroom upgrades and replacements

Water softeners supplied and fitted

New lighting designs for kitchens, bathrooms etc

Consumer unit upgrades and certification

Valiant Boiler's approved installer



Contact Ross Electrics for Power Flushing

**01494 565707 07831 801747**

## Logs for Sale

seasoned

Free Delivery

07816 507564

or

01844 274096

dpope1986@hotmail.com



Decoration Specialists

\*Professional \*Competent \*Experienced

Established since 1973

**07785 225 675**  
**01494 257 482**

www.paint-ability.co.uk

## A Message from Bradenham Vicarage - *Wings and a prayer*

A vicar I know (VIK) had a problem. Rats! They had invaded his churchyard to such an extent that the church could easily have been renamed St Pied Piper of Hamelin's. Visitors and worshippers arriving at the church would see rats running across the paths in front of them – disturbing. Families of rats were seen cavorting and playing on newly dug graves in the churchyard – distressing. Rats sometimes got into the heating ducts and died there – disgusting.

The pest control officers had been out, traps and bait boxes laid, runs blocked but all to no avail. If anything, the problem was worsening. Finally, one pest control officer remarked that the real problem was people feeding the pigeons that flocked around the church. Food left on the ground was attracting and sustaining the rats, allowing them to breed uncontrollably. Stop people feeding the pigeons the officer said and the problem will resolve itself. But how do you stop the public feeding the pigeons?

VIK and his church wardens held a prayer walk around the church, asking God for an answer to the problem. A few days later, a sleek hawk with a slate grey back, barred breast and dark pendulous markings under its eyes was seen in the vicinity of the church tower. Shortly after this, a second bird was seen. Peregrine falcons! The pair had decided to set up home in the church tower. The tower was a perfect location for them. Its height afforded them protection and allowed them to survey their territory. The carvings and ledges gave ample shelter and nest building space. AND there was an abundance of their favourite food – pigeon!

The pigeons quickly discovered the threat the peregrines posed them and soon learned they were at far less risk from attack if they roosted rather than scratching about on the ground. People tend to feed pigeons when they see them on the ground, so didn't feed them so frequently and much less food was scattered about the churchyard. Within a few weeks, the rats were barely noticeable. If you visit the church now, you will rarely see even one rat. Problem solved!

When we pray to God, we often think we know what the best answer should be. 'Dear God, please let...!' is the common form. VIK prayed for the baits to take effect – but bait boxes contain poisons and are not very eco-friendly for a number of reasons. Not in his wildest dreams could he have imagined the provision of this 100% natural, eco-friendly solution. A year has now passed. The pigeons are still there, but you will see them roosting rather than flocking on the ground and amazingly, the health of their local population has improved – gone are the scrawny birds with club feet or twisted beaks. The rats are breeding far less and the natural cycle of birth and death has massively reduced their numbers. Nature's balance has been restored and VIK is VERY happy as peregrines are his favourite British bird of prey. A prayer answered with abundance, grace and a win-win solution.

May your prayers be answered with such abundant grace.

Every blessing,

*Rev Jenny Ellis*

## Bon Ami

Hello Customers and all,

We hope that everyone is safe and well. We are very sorry that we have not been able to see and serve you in these difficult times. We had hoped to hold commemorative VE Day celebrations with you

We are currently looking into the logistics of offering a take away service for pre-ordered and pre-paid afternoon teas. We hope that we could start this in the middle of June. We hope that this will be of interest to you all. Please keep an eye on our Facebook page for further details. In the meantime please stay safe and we will "Meet again" very soon.



Regards,  
*Amanda and Ruth*

## Need a Plumber?

Leaky Taps to full  
Bathroom Installation plus  
Boilers & Heating Systems,



**Jonathan Dell 07786 386912**

We are a Local Family Business and we operate a fair price policy continually comparing prices locally and nationally.

[www.facebook.com/aquadellplumbing](http://www.facebook.com/aquadellplumbing)



**Kelly Walker**

Pet Sitting Service

Email: [adoremypet@hotmail.com](mailto:adoremypet@hotmail.com)

Tel: 01494 488791

Mobile: 07961 182220

[www.adoremypet.co.uk](http://www.adoremypet.co.uk)

## WESTFIELD LEASING

Personal or Business car & van leasing  
(A new car could be cheaper than you think.)

Free advice and quotes available

**01494 569392**

[john@westfieldleasing.co.uk](mailto:john@westfieldleasing.co.uk)

## PUPPY & DOG TRAINING CLASSES, 1-2-1's & BEHAVIOUR

In High Wycombe, Beaconsfield, Haddenham & surrounding areas  
Small classes using reward-based methods

Qualified, experienced instructor

Member of APDT & CAPBT

Tel. 07903 303 472

[www.suzannebullworthy.weebly.com](http://www.suzannebullworthy.weebly.com)

## P.S.B Carpentry Ltd

*Here for all your carpentry needs!*

- House refurbishments
- Extension
- Loft Conversions
- Barn Conversions
- Kitchens
- Bathrooms
- Bedroom Refits
- Roofing



- Solid Wood Flooring
- Laminate Flooring
- Skirting and Coverings
- Decking
- Flat Pack Assembly
- Made to Measure Units
- Door Fitting
- Tiling



For a free quote call Paul on:

**07752 630427 / 01494 866579**

email: [PSBCarpentry@outlook.com](mailto:PSBCarpentry@outlook.com)

## A. ELLIS Tree Surgery

Fully Qualified Tree Surgeons



We undertake all aspects of hedge trimming and tree surgery

For a free, no obligation quote please contact us

T: 01494 817234 M: 07709 491589

E: [info@aellistrees.com](mailto:info@aellistrees.com)

[www.aellistrees.com](http://www.aellistrees.com)

For fencing enquiries call Mike on:

T: 01494 868466

A background image of pink flowers, possibly cherry blossoms, with green leaves, framing the text.

### Rhona Philcox (nee Kent)

The family of Rona Philcox (nee Kent) are sad to announce that she passed away on Tuesday 7th April 2020, aged 93.

Rona and her late husband, Fred, had been residents of Bayley Gardens, Naphill from 1967 until Rona left in 2012. Rona & Fred loved living in Naphill. Rona, an Accountant by trade, had been an active member of Naphill Neighbours enjoying many a trip out with them and also attended the Methodist Chapel. She had also devoted much of her life to service in the St John Ambulance Brigade.

She will be greatly missed by family and friends.

Kind regards

*Sarah Wells*

A background image of a forest with tall trees and blue flowers in the foreground.

### Notice of Thanks

*Janet Beetham would like thank everyone for their kind words and condolences following the death of her husband Graham Cook on 2nd April 2020. Graham had lived in Naphill since 1987 and was an active member of the Men's Club. Donations to Rennie Grove.*

*photograph courtesy Dave Talbot*



## Carpet & Upholstery Cleaning Specialists

### Why You Should Choose Us ...

- Thorough Cleaning & Outstanding Service
- State of the Art Truckmounted Cleaning System
- Most Carpets Dry within 2 hours
- Fully Insured
- Free On-Site Quotations
- Carpet Stainguard with Dustmite & Allergy Control
- Spot, Stain and Odour Removal

**PRO CARE**

Carpet & Upholstery  
Cleaning Services

**07798 742835**

01494 489804

[www.procurecarpetcleaning.co.uk](http://www.procurecarpetcleaning.co.uk)



## CHIMNEY SWEEP



NO MESS

CALL SIMON



**01844 343726 07936 791833**

## KENT MURRAY GENERAL BUILDER & HANDYMAN

ALL WORKS UNDERTAKEN  
PATIOS, FENCING  
BRICKWORKS, PAINTING  
DECORATING  
ANYTHING INTERNALLY/ EXTERNALLY  
FREE ESTIMATES

Mob: **07831 541552** Tel: **01494 527532**

email: [kentmurryhmp@btconnect.com](mailto:kentmurryhmp@btconnect.com)

## AIRS HOUSE PRINCES RISBOROUGH

for  
QUALITY CARPETS, TILES,  
VINYL & WOOD FLOORING

**01844 342546**

Station Parade, Summerleys Road, Princes Risborough  
E-mail [sales@airshouse.co.uk](mailto:sales@airshouse.co.uk)

## RJH Garden Machinery

- Mower servicing and repairs
- Blade sharpening and balancing
- Cultivator servicing and repairs
- Chainsaws/ hedge trimmers etc
- Engine oils

Call Robert: **07799 606949**

email: [robhastie@gmail.com](mailto:robhastie@gmail.com)



DELUXE ROOFING  
CONTRACTORS  
& SUPPLIERS LTD



**John Mulry Mobile: 07860 845343**

\*NEW ROOFS \*RE-TILING \*SLATING \*FLAT ROOFS

\*SARNAFIL & SINGLE PLY \*LEAD ROOFS

APPROVED CONTRACTORS  
FREE ESTIMATES

Binders Industrial Estate, Cryers Hill, High Wycombe, HP15 6LJ

Phone 01494 716184 Fax 01494 717384

Email [johnmulry@deluxeroofing.co.uk](mailto:johnmulry@deluxeroofing.co.uk)



## Lee Davies

Fireplace and Brickwork Specialist

- Fireplaces installed and supplied
- Stoves installed & Chimneys lined
- Gas Fires serviced and repaired
- Smokey Fireplaces solved
- All types of brickwork undertaken
- Brick and Inglenook fireplaces
- No chimney - no problem
- Fencing, decking and patios



Telephone: **01844 343660** Mobile: **07900 156803**



## NKW LOCKSMITHS

All Types of Locks Supplied and Fitted

- \* Insurance Work
- \* Burglary Damage \* Security surveys
- \* Woodwork repairs and replacement doors
- \* Fitting of insurance rated locks and multi locking systems

**TEL: DAY 07774 190027**  
**EVE 01296 330206**

British Locksmiths Institute Advance Course Certified



## A Message from Saint Michael's and All Angels Hughenden Vicarage

As I write this month's reflections from the Vicarage, we are half-way through May, almost two months into our national lockdown, and growing accustomed to a strange new-norm – or perhaps you are crawling up the walls and desperate to do all those things you had taken for granted before, but which we are currently not permitted to do, due to public health concerns.

I have been thinking at some length over the last few days about the role of technology in our current epidemic – how it has facilitated so much, which would not have been possible 10 or 15 years ago, but in turn has potentially caused further social isolation for those who do not own a smart phone, and are not on the internet.

One day last week I spent over 5 hours on Zoom (which is a video-conferencing application for those who don't know). I took part in a diocesan committee meeting about the Church of South India, I had an enjoyable meeting with my colleagues Helen and TJ, and in the evening we had Jacobs Crackers housegroup, during which time we (somewhat belatedly) finished our Lent course material.

I am very new to video-conferencing and find myself marvelling at what it can allow you and I to do. I have coaxed my parents to start using it, and we now have a weekly Zoom family call with them and my sister's family, and I hear similar stories throughout the community.

Technology allows us to share fellowship virtually, which is so much more effective than a phone call. We support those who are struggling to get their apparatus to work (I mention no names, but you know who you are!), grind our teeth if the broadband goes off, try to co-ordinate our efforts with our family members also calling on this elixir of life to keep connected, and get by from one day to another.

However, video-conferencing will always be second best to meeting people face-to-face. I really miss my two weekly sessions in the local cafes, chatting with local people, perhaps offering a sympathetic ear, sharing a joke and life stories with those who find themselves at my table. I am going to really cherish when some degree of normality returns, and my coffee chats can recommence. Please Lord may I never take my freedoms for granted and cherish them even more in the future.

As I have said during our St Michaels @ 10 service broadcasts every Sunday, when life is stripped down to such as we are experiencing right now, our life priorities are shaken and we have an invaluable opportunity to ask the question – what or who is most important to me? What do I miss the most which I cannot currently do? For me, it's all about relationships. I miss being able to meet with friends and family in person and be free to interact with them without donning PPE first.

As a Christian, my relationship with Jesus Christ is the most important relationship in my life. I have more time and space during the lockdown to devote to him, and my hope and prayer is that I will use the time wisely, in order that I might appreciate the other relationships in my life more deeply.

How about you?

Rev Keith Johnson

## Church News

At the time of writing, all Churches remains physically closed, but services continue at St Michael's in the virtual world we are all relying on so much. For those who cannot access the internet it is possible to join in the services by phone. (see all details below)

### Accessing St Michael's @ 10

To watch, either 'as live' or any time after broadcast, you can go to:

Website: <https://www.hughendenparishchurch.org.uk/Services>

YouTube: <https://www.youtube.com/hughendenchurch>

Facebook: <http://www.facebook.com/hughendenchurch>

People without access to the Internet can listen to the St Michael's @ 10 service using their telephone.

- Between 9.55am and 10.00am, call this number: 020 3481 5237
- When asked for a "meeting ID", enter the number 951 289 9440 followed by #
- When asked for a "participant ID", just press # once again
- After that, listen to the music until the service starts just after 10.00am

*The cost of listening will depend on the person's telephone provider and whether they have any calls included with their contract: it should cost the same as a weekend telephone call to London.*

The 'attendances' are very encouraging and include friends old and new from far and wide. The services include

St Michael's@10, broadcast every Sunday 'as live' from 10 a.m. (and streaming thereafter).

JC Club is broadcast weekly and the Tiny Tots service monthly. Information about these services and all other news, including access to the Parish Magazine (Outlook) is available from: [www.hughendenparishchurch.org.uk](http://www.hughendenparishchurch.org.uk)

All changes to Church opening and ceremony availability will be posted on the website.

Jane Tyrer - Communications

# oventeam

domestic oven cleaning service



Formerly Ovensclean  
now independent

Your local oven cleaning service

All makes of ovens, hobs, extractors,  
microwaves and BBQs restored to their  
former glory by reliable and  
fully trained experts

## 01494 766155

## SHARLEY DOMESTICS

BUILT-IN APPLIANCE SPECIALIST

### SERVICE REPAIRS



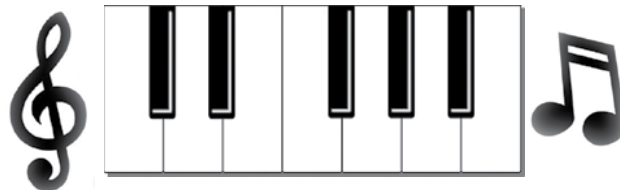
- COOKERS
- OVENS
- HOBBS
- WASHING MACHINES
- DISHWASHERS
- FRIDGE FREEZERS
- DRYERS
- VACS

**Tel: 01494 485926**

**Fax: 01494 484140**

[www.sharleydomestics.com](http://www.sharleydomestics.com)

## Piano lessons - Home tuition



*Learn to play the piano or keyboard in the  
comfort and convenience of your own home*

- Both fun and educational for children.
- For parents, you could guide, assist and play duets with your offspring, or just learn to play for your own enjoyment.
- Learning a new skill is said to be effective in delaying dementia in the elderly.
- Is there a more pleasant skill than learning to play the piano.

*Call Roger on*

**01494 562953**

*to learn more.*



## PROPERTY ELECTRICAL SERVICES

*Domestic and Commercial Installations*

### Local Electrical Contractor

- *Rewires*
- *Extensions*
- *Heating systems*
- *Test and inspections*
- *Maintenance*

Part P installer to the  
new 17th edition  
electrical regulations



**Tel: 07786803701 or 01494 636311**

Email: [info@propertyelectrical.co.uk](mailto:info@propertyelectrical.co.uk)

## Slimming World Hughenden Valley with Kerry

Wow! Its been 6 weeks now that I have been running our Temporary Virtual Slimming World Group. We had no idea how long we would have to do this, and still don't. So, for now this is the way until we can get back to group properly.

It's been a lot of work to put it all together, but is now working really well and my members seem to be enjoying themselves. I thought for this month's gazette I would ask my members to tell you what they think of the Virtual Group: -

**Lauren says** - *The virtual groups have been a great way of staying accountable and motivated. It is encouraging to know that other people have the same struggles during these strange times and the weekly meetings give me something to aim for when I'm lacking motivation.*

**Sam (a new member)** - *For me only just becoming a new member. I think I would rather do class on line than have to sit in group this way I get the best if both (it's a confidence thing for me) I am self-conscious.*

**Marion D** - *The virtual groups have been a great way to keep in touch, getting and giving the continued support needed in all this madness. There are things I have no control over in these strange times, the virtual group lets me have control of my weight loss. x*

**Jackie** - *I have found the virtual groups really helpful. Knowing we have our virtual meetings has made me focus when I'm struggling*

**Sue** - *The virtual groups have been a godsend over the past few months. The support you receive is amazing, and reassuring to know we all have our good days and bad days. Everyone is so friendly and supportive to help you get back on plan with lots of ideas and recipes. Kerry is a fantastic consultant who really cares about your weight-loss journey x*

**Nikita says** - *I've found the virtual groups to be a little bit of normal in a crazy world!! I love seeing everyone each week and it's keeping me focused to keep going! Loving the support from every one and the challenges to get us moving when it could be very easy to sit in our pjs all day and eat cake!!*

**Debbie J** - *Being in your own home makes it a relaxed environment and the group are so supportive of each other - it's great to clap each other on our successes - I am glad Kerry and SW managed to keep the group going - thank you*

It has been my absolute pleasure looking after my members and a joy to have written out all these lovely awards to give to my members, whilst in lockdown.

We are currently holding our Virtual Group Sessions at 5.30 pm and 7 pm every Thursday.

For more information please contact Kerry on 07887 - 567264

Everyone gets a warm welcome!

Stay Safe and well,

Kerry

Come Join Me at  
*my*  
Slimming  
World  
*virtual group*

*your virtual support package!*

Your Private Facebook Group!	Website, App, and Shop!	Access to video group sessions!	Support from Me Your Consultant!

*All at a Discounted Cost!*

And in the comfort of your own home  
I'd love to tell you How!

**Paul's Plumbing**  
**07786 175123**

Friendly, Reliable & Local

## ELECTRICS & PLUMBING

**Electrics . Heating . Plumbing**  
**Problem solving**

Electrical inspection & testing • Consumer units  
Heating controls • Internal & external wiring  
Bathrooms • Kitchens • Taps • Leaks



Based in North Dean.

Local to Speen, Naphill, Walter's Ash,  
Lacey Green, Hampden, Hughenden

Paul Newman Ltd. 07786 175123 | 01494 565573

# Canine Cutz



## Dog Grooming

- Shampoo and conditioning treatments
- Clipping
- Scissor trimming
- Nail clipping
- Anal gland expressing
- Ear plucking and cleaning

*We offer extended opening hours, a late night on a Thursday and the occasional Saturday morning. Delivery and collection Service is available at a small additional fee.*

**01494 443349**

[www.canine-cutz.com](http://www.canine-cutz.com)  
[info@canine-cutz.com](mailto:info@canine-cutz.com)

**High Street, Downley, HP13 5XJ**



**PJ Hardinge & Son Ltd**  
Plumbing & Heating  
Installation, Service & Maintenance

## For All Your Plumbing & Heating Needs

- Bathroom & Shower Room Refurbishments
- Gas Installation, Servicing & Repairs
- Underfloor Heating, Central Heating &
- Hot Water
- Tanks, Taps Toilets & Cylinders

**Free Quotations**  
**24hr Emergency Call Out**

**Tel: 01494 263957**  
**Mob: 07810 038198**

**Email: paulhardinge@yahoo.co.uk**



## HAVING PROBLEMS WITH YOUR NEWSPAPER DELIVERY?

M.H. Freeman newsagent, reliable family-run business. Delivering to Naphill and Walter's Ash for over six years and looking to include your choice of newspapers and magazine in our round.

Please ring **01494 526425** with your order

**Visual impact**  
window cleaning

**Jon Coulson**

Exterior & Interior Window Cleaning

Gutter Cleaning

Conservatory Cleaning

Pressure Washing

© 078 756 76485

© jonathancoulson@ymail.com

## Small Ads

**REIKI TREATMENT THERAPIST** and tarot card reader (35 years experience) based in Naphill . All treatments carried out in a Professional relaxing and peaceful environment. I also am a qualified Teacher of both Reiki and Tarot. Sunday courses available. Dee on 07765884363Deebangel43@yahoo.co.uk

**PROFESSIONAL CLEANING SERVICES.** Domestic, Spring Cleans, End of Tenancy, March Outs, Moving Home, and End of Build Cleans. Local, Trustworthy and reliable. References available on request. Fully insured. Call Una 07808 518450

**PILATES AND YOGA WITH PAMELA** Local classes am and pm. See full timetable on web site <http://pilates-with-pamela.heyweb.com/>. Please call to register /for more info Pamela 07759 831706.

**A J KEEN APPLIANCE REPAIRS.** Repairs to all makes of washing machines, dishwashers, cookers etc. including Bosch, Neff, Siemens and Miele. Very competitive rates, over 30 years' experience. Same day call-out if available. Call Alastair 01494 565255 or 07785 522623.

**MASSAGE:** Relaxing or Remedial. MASSAGE to help alleviate pain in shoulders, neck and back etc. Experienced therapist offering therapeutic, deep tissue, sports or acupressure massage. Home visits possible. Pamela Wilson 07759 831706 (ITEC/FHT registered).

**TK PLUMBING & ELECTRICS.** For all your plumbing and electrical needs. City & Guilds qualified. No job too small. All work guaranteed. References can be supplied. Call Tom on 01494 580518 or 07716 440916.

**ROOFING SERVICES - W. WHITE ROOFING** Provides a modern, professional and friendly service. Call William White for your Roofing requirements, free estimates and advice! TEL 01494 355187 MOB 07832 146427 EMAIL [william@wwhiteroofing.co.uk](mailto:william@wwhiteroofing.co.uk)

**LOCAL WINDOW CLEANER** Friendly professional service & Fully insured. Cleaning windows the traditional way. Also available, Solar Panels, Conservatory Roofs, Gutters, Fascia & Cladding Cleaning. Supported by The Princes Trust. Call Mathew 07818644583 Email. [powell.cleaning@hotmail.com](mailto:powell.cleaning@hotmail.com)

**SPEEN PILATES STUDIO** Newly built Pilates studio. Specialist Pilates classes on a 1:1 or small class 1:6 available, both day and evening. Matwork and Reformer Pilates Foundation Teacher and member of NHSTA. Call Amanda 07733 307475

**HAIR STYLIST.** Fully qualified and experienced. Offering hairdressing in the comfort of your own home or come to my fully fitted salon. Call Sam on: 07843257689

**MOBILE BEAUTY THERAPIST** Mobile beauty therapist 21 years experience shellac manicure pedicure eyelash extensions makeup prom makeup pamper party kids pamper party waxing facial massage tinting 07921622357 [www.ivermeehomebeauty.co.uk](http://www.ivermeehomebeauty.co.uk)

**LOCKSMITH:** Local Locksmith available 24/7 for emergency repairs & boarding up. Locks supplied, fitted, opened or upgraded. No call out fees, fast response Tel: 01844 274229 (day) or 07702 809477 (night) [www.rpclocksmiths.co.uk](http://www.rpclocksmiths.co.uk)

**PICTURE FRAMING.** Local picture framing service. No frame too big or too small! Call Woz at Flash Frames 07836506085 / [wozgreen@googlemail.com](mailto:wozgreen@googlemail.com)

**YOGA IN NAPHILL** Tuesdays during term time 1.30-2.45 pm, Village Hall. All abilities welcome Improve your strength and flexibility, reduce stress, give body and mind a boost. Termly and drop in rates available. Enquiries to Tessa: 07941966004/ email: [tessayoga@icloud.com](mailto:tessayoga@icloud.com) [www.yogawithtessa.wixsite.com/info](http://www.yogawithtessa.wixsite.com/info)

**11 PLUS TUITION** Excellent 11 plus tutoring right here in the village! Available term time and week ends, for 1 to 1 tuition. 6 years experience. Excellent results! Call Jo on 07976 626769, or 01494 563776.

**ACCENTS INTERIORS.** Lady Decorator. Professional painting & decorating service. City & Guilds Qualified. Call Silra van Praag Stanley on 07814 243499 or email [accentsinteriors@outlook.com](mailto:accentsinteriors@outlook.com)

**HUGHENDEN VALLEY FOOT CLINIC** Foot problems, toenail reconstruction and routine foot care. Fully qualified MCFHP, MAFHP, DBS checked. For appointments call Sarah 01494 913187. [www.hughendenvalleyfootclinic.com](http://www.hughendenvalleyfootclinic.com)

**CRYSTAL HEALING THERAPIST** Reiki treatments & Indian Head Massage. Enables your wellbeing & relaxation. I also teach meditation & Reiki. Call Heather 07377 537070 or email: [mooncrafting@outlook.com](mailto:mooncrafting@outlook.com). Facebook & Instagram as MoonCrafting, [www.mooncrafting.com](http://www.mooncrafting.com)

**CLEAN & TIDY DECORATORS.** All aspects of the trade, internal and external. 25 years' experience, reasonable rates. Professional, friendly and reliable. Based locally, Main Road, Naphill. Please call Steve on 07932 749510. 'If a job's worth doing then it's worth doing well!'

**MARCH MAINTENANCE** - Professional and friendly gardening services including - lawn mowing, bush & hedge trimming, weed control, pruning, planting, clean-ups & more. Call/Text 07391723512 or email [maintenance@outlook.com](mailto:maintenance@outlook.com)."

**PAWS & SNORES** Dog Walking, Day Care & Home Boarding Fully Insured & Licensed CDC DBS checked, Pet first Aid Trained Here for all your dog's needs day or night Email: [pawsandsnores@hotmail.com](mailto:pawsandsnores@hotmail.com) Mobile: 07470 138726 Facebook: [www.facebook.com/maximuss66](http://www.facebook.com/maximuss66)

**LAWN MOWING.** Local, friendly, reliable, regular lawn mowing service. Weekly, fortnightly or monthly to suit your requirements. Established for over 11 years. For a free quote please call Alan on 01494 443362 or email: [lawns@alandriver.com](mailto:lawns@alandriver.com)

**MATHS TUITION** Struggling with maths? I can help you to grow in confidence and reach your full potential. Experienced, retired teacher. Based in Naphill. All levels of maths tuition to GCSE. Tel 0784137483

**HIGHCLERE IRONING** Your local professional ironing service, using state of the art professional grade equipment. Free local collection and delivery within Naphill and surrounding areas. I provide a 24 or 48 hour turnaround. Contact Liz on 07890 056696

# MOBILE FISH AND CHIP VAN

**SERVING:**

LACEY GREEN  
WALTERS ASH  
NAPHILL

EVERY SATURDAY  
3.30PM TILL 7.30PM

ONLINE TRACKER  
AVAILABLE

HOME DELIVERY  
AVAILABLE WHERE  
POSSIBLE

**27**

DIFFERENT STOPS  
FULL ROAD LIST ON  
FACEBOOK  
FACEBOOK.COM/  
MOBILECHIPPY

**07376395678**



HAVING THE FAMILY OVER?  
WHY NOT PRE-ORDER LARGE ORDERS TO  
AVOID WAITING

## Beautiful lawns at affordable prices

# Lawn Master®

professional lawn care



A Corporate Member

SEE RESULTS IN JUST  
**10 DAYS**

## Your lawn, our expertise...perfect!

Call for a **FREE** no obligation quotation

**0800 326 5017** [www.lawnmaster.co.uk](http://www.lawnmaster.co.uk)

Or just text 'lawn' and your postcode to 60777 and we will call you.



@LawnMasterUK



@LawnMasterUK



/LawnMasterTV



**PRM SERVICES**  
Property & Garden Maintenance

**Garden Maintenance**

- All general gardening
- Lawn & hedge cutting
- Garden clearance
  - Patios
  - Fencing
  - Decking
  - Turfing
- Millboard decking approved installer

**Property Maintenance**

- General maintenance inside and out
- Internal painting & decorating
- Laminate flooring

*“ Paul did a lovely job rebuilding our courtyard, very pleased with it and other work he has undertaken for us. Lovely hardworking man and can recommend his work ”*  
- Facebook review

Based in Naphill, High Wycombe, I believe in delivering excellent customer standards by providing a high quality, reliable and personal service. I am fully insured and both private and commercial contracts welcome.

**Call or email Paul for a free quote.**

07808 056109 / 01494 563784  
p.munday@hotmail.co.uk

 Follow us on Facebook (facebook.com/PRMservices)

Take the right direction with expert financial advice



We provide a comprehensive wealth management service, offering specialist face-to-face advice tailored to you. Our services include:

- Investment Planning
- Retirement Planning
- Inheritance Tax Planning
- Intergenerational Planning

For further details please contact:

**argent**  
FINANCIAL PLANNERS

Tel: 01494 257 856 | Email: nick.barber@sjpp.co.uk  
www.argentwm.co.uk

H25JP0090 01 / 20






**Experts in our field!**

I am your local agent who lives and works in the village. I have extensive local knowledge and am ideally placed to sell or let your property. Please call, email, or better still pop in to arrange a free, no obligation market or rental appraisal.

129 Main Road  
Naphill  
HP14 4SA

**01494 565555**

Naphill@wyecountry.co.uk  
www.wyecountry.co.uk



*Alan Draper*



jnp.co.uk

# Thinking of selling or letting in these areas?



## We've got it covered.

Call today for a FREE valuation from the number one agent

### Services

see above for contact numbers

**Residential Sales | Residential Lettings | Mortgage Advice | Conveyancing | Land & New Homes | Fine & Country**



jnp estate-agents



@jnpestateagents